



- Concrete:
- All slabs are to be 4" concrete over 4" gravel unless otherwise noted on the plans.
 - Concrete to be ACI 309.46, Type II cement, 2500 psi at 28 days, 5' maximum slump.
 - Reinforcing to be ASTM A615-bars with Fy-60 ksi temp 30-diameter minimum at splices or weld per ACI 308.
 - Concrete design based on Fc 2000 psl, Fc 2500 psl for quality only.
 - Anchor bolts shall be A-307 embedded 7" minimum into concrete or masonry grout.



BASEMENT PLAN
SCALE 1/8"=1'-0"

INSULATION SCHEDULE

Ceilings	R-38 Min
Wall above grade	R-19 Min
Wall interior below grade	R-13 Min

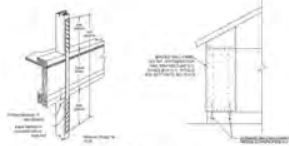
FOOTING SCHEDULE

HOUSE WALLS	20" x 10" Min
DECKS & PORCHES	16" x 10" Min
BEARING WALL	20" x 10" Min
GARAGE WALL	18" x 10" Min

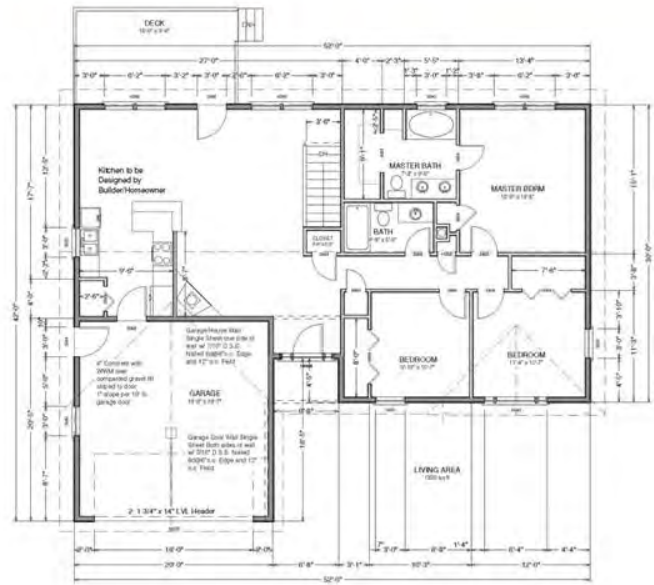
Min 2 #4 Rebar Horizontal on undisturbed or compacted soil

VENTING SCHEDULE

Range Hoods	Vent Through Roof
All Bath Fans	Vent to Exterior
Dryer Vent	Vent to Exterior



BRACED WALLS AND ALL BRACED WALL OPTIONS
Brace all exterior walls and cross-wall partitions at each end of building and at least every 20' of length for one of the following:
a. Simpson WPS-125 wall bracing with 3-1/4" dia nails at each end and 1-4" dia nails at each stud.
b. Physical bracing of a minimum modulus of 3.0E+6.
c. Continuous bracing from floor to floor.
Simpson H-RAFD strap tension marker

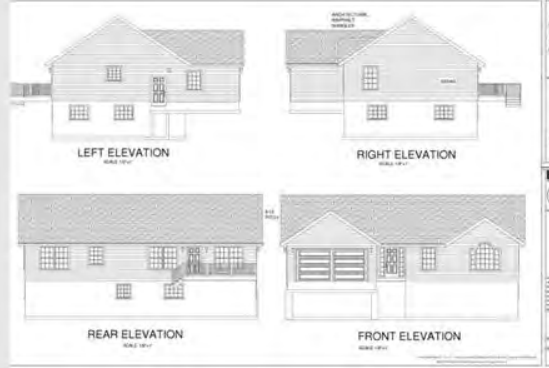


MAIN FLOOR PLAN

DOOR SCHEDULE					
NUMBER	QTY	FLOOR	SIZE	DIMENSIONS	DESCRIPTION
D01	1	1	11068	22X80X1 3/8"	4-PANEL
D02	1	1	18070	192X84"	GARAGE 2-PANEL
D03	1	1	2668	24X80X1 3/8"	4-PANEL
D04	1	1	2668	30X80"	BIFOLD
D05	4	1	2669	30X80X1 3/8"	4-PANEL
D06	2	1	2668	32X80X1 3/8"	6-PANEL
D07	3	1	3068	36X80X1 3/4"	EXT 6-PANEL
D08	1	1	5088	30X80"	BIFOLD
D09	1	1	5698	33X80"	BIFOLD
D10	3	0	2668	32X80X1 3/8"	4-PANEL
D11	1	0	2668	32X80X1 3/8"	4-PANEL
D12	1	1	2668	32X80X1 3/8"	4-PANEL

WINDOW SCHEDULE					
NUMBER	QTY	FLOOR	SIZE	DIMENSIONS	DESCRIPTION
W01	1	1	3030	36"X36"	DOUBLE HUNG
W02	2	1	3040	36"X48"	DOUBLE HUNG
W03	1	1	54110	64"X22 3/8"	6016
W04	1	1	5468	64"X20"	MULLED UNIT
W05	3	1	6250	74"X60"	MULLED UNIT
W06	2	1	3050	36"X60"	DOUBLE HUNG
W07	1	1	6460	76"X72"	MULLED UNIT
W08	5	0	4030	48"X36"	RIGHT SLIDING
W09	1	0	3030	36"X36"	RIGHT SLIDING

Residential Design
SDS-CAD
Specialized Design Systems



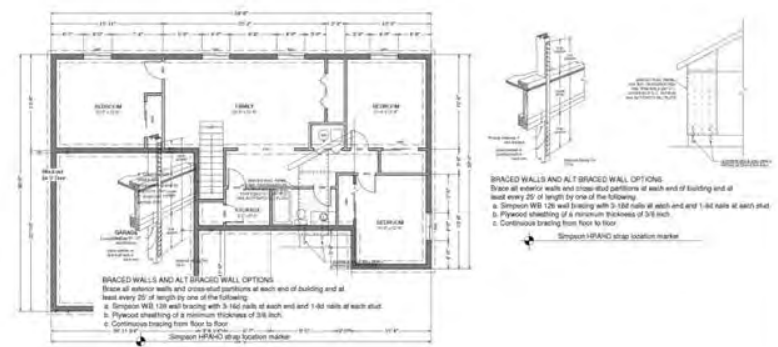
Ranch House Plan #62

1330 Sq Ft Main
3 Bedroom 2 Bath
Large Deck
Basement





- Concrete
1. All slabs are to be 4" concrete over #4 gravel unless otherwise noted on the plans.
 2. Concrete to be ACI 308.6R. Type II cement, 2000 psi at 28 days, 18" maximum slump.
 3. Reinforcing to be ASTM A615 Bars with Fy=60 ksi temp 50. Maximum diameter of splices or weld per ACI 308.
 4. Concrete design based on Fc=2000 psi, Fc 2000 psi for quality entry.
 5. Anchor bolts shall be A-307 embedded 2" minimum into concrete or masonry grout.



BASEMENT PLAN
SCALE 1/8"=1'

DOOR SCHEDULE				
NUMBER	QTY	FLOOR	SIZE	DESCRIPTION
D01	6	0	2568	3 PANEL DOOR - COLOR BRITE WHITE
D02	1	0	4368	BIFOLD
D03	1	0	3068	BIFOLD
D04	3	0	5068	SLIDER
D05	1	1	14070	GARAGE 2-PANEL
D06	1	1	2268	3 PANEL DOOR - COLOR BRITE WHITE
D07	2	1	2468	3 PANEL DOOR - COLOR BRITE WHITE
D08	5	1	2568	3 PANEL DOOR - COLOR BRITE WHITE
D09	3	1	3068	EXT. 6-PANEL
D10	1	1	3668	BIFOLD
D11	1	1	4668	BIFOLD
D12	1	1	5568	BIFOLD

WINDOW SCHEDULE					
NUMBER	QTY	FLOOR	SIZE	DIMENSIONS	DESCRIPTION
W01	5	0	4200	48"x36"	RIGHT SLIDING
W02	1	1	2250	26"x36"	SINGLE HUNG
W03	1	1	3050	36"x36"	RIGHT SLIDING
W04	2	1	3240	36"x48"	SINGLE HUNG
W05	3	1	3050	36"x60"	SINGLE HUNG
W06	1	1	4050	48"x36"	RIGHT SLIDING
W07	1	1	6250	74"x60"	MULLED UNIT

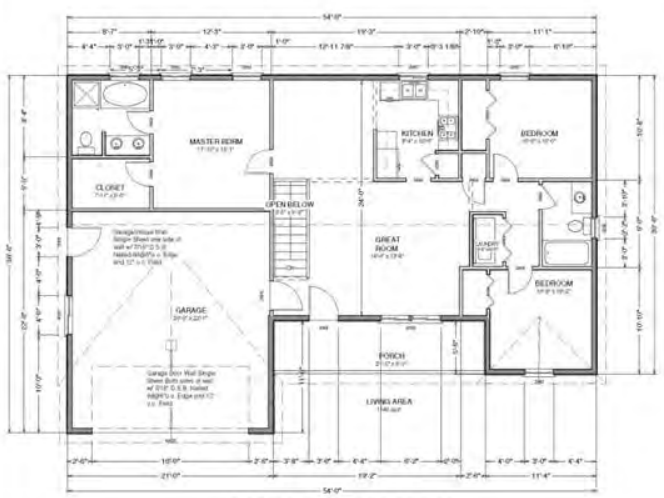
FOOTING SCHEDULE		
HOUSE WALLS	20" x 9" Min	
DECKS & PORCHES	18" x 9" Min	
BEARING WALL	20" x 9" Min	
GARAGE WALL	18" x 9" Min	

Min 2 #4 Rebar Horizontal on undisturbed or compacted soil

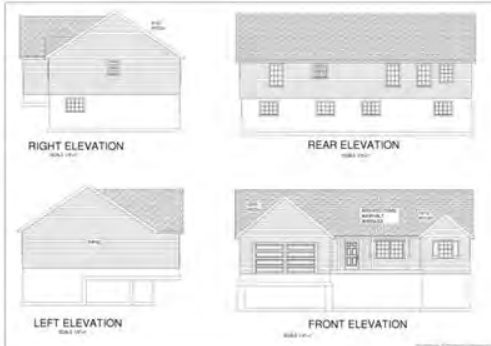
VENTING SCHEDULE		
Range Hoods	Vent Through Roof	
All Bath Fans	Vent to Exterior	
Dryer Vent	Vent to Exterior	

- ATTIC VENTILATION**
 AREA / 300
- PROVIDE 1" MIN. AIR GAP AT EAVES WITH INSULATION BAFFLES TYP. AT ALL TRUSS BAYS.
- PROVIDE GABLE VENTS ALL GABLE ENDS.
- PROVIDE GALV. ROOF VENTS ON BACKSIDE OF ROOFLINE ABOVE CONDITIONED AREA.

INSULATION SCHEDULE		
Ceilings	R-38 Min	
Wall above grade	R-19 Min	
Wall interior below grade	R-13 Min	



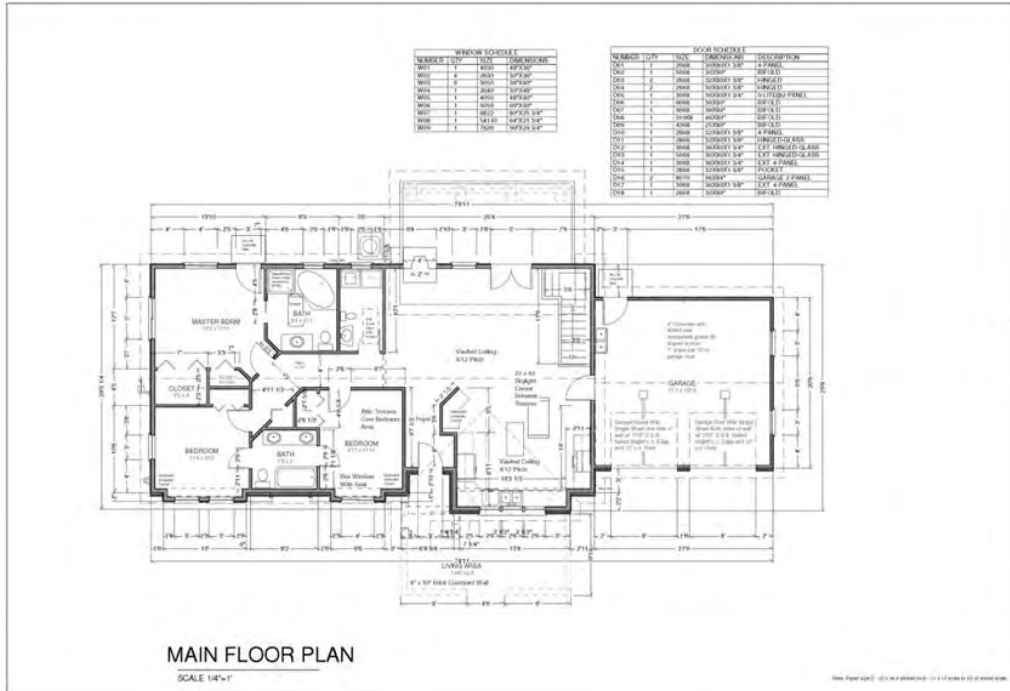
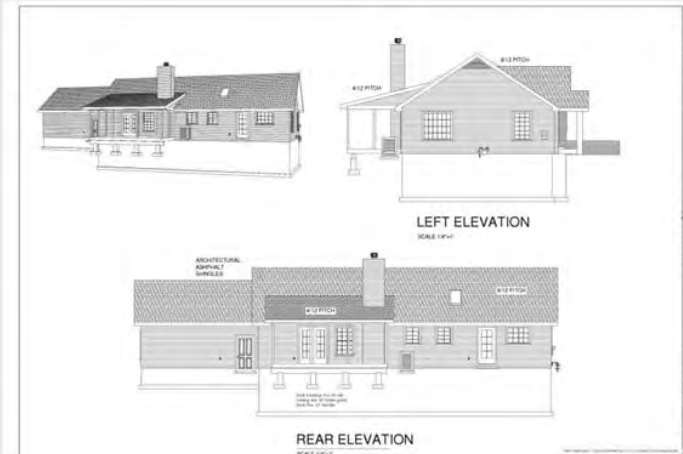
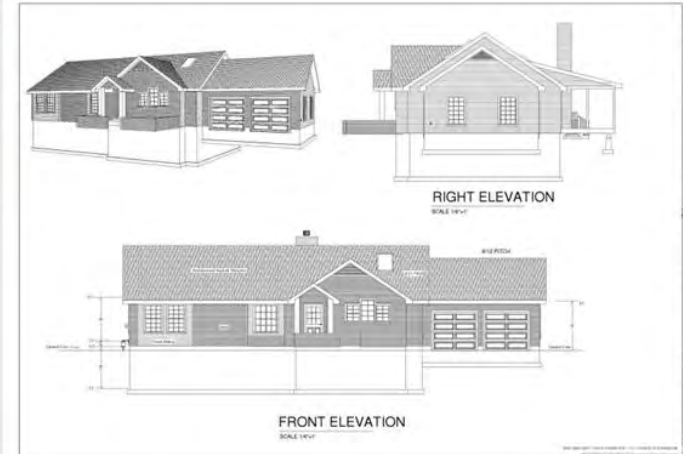
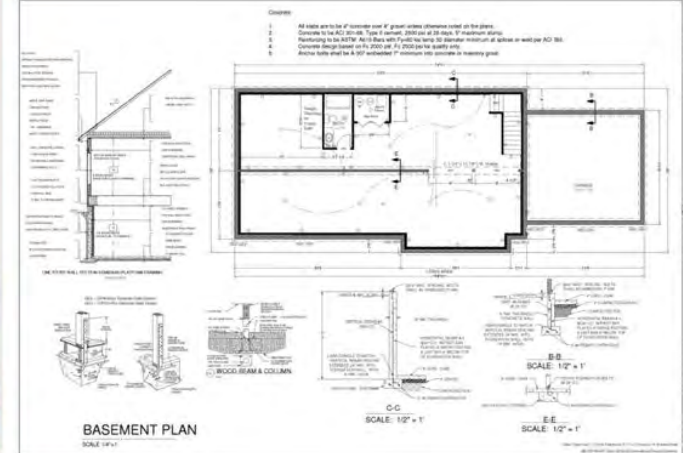
MAIN FLOOR PLAN
SCALE 1/8"=1'



Custom House Plan #65

1140 Sq Ft Main
 3 Bedroom 2 Bath
 Full Basement
 2 Car Garage





Residential Design

SDS-CAD
Specialized Design Systems

Residential Design

SDS-CAD
Specialized Design Systems



Custom Home Design
Plan #101
By SDS-CAD Specialized Design Systems

BUILDING CONTRACT DRAWING OWNER TO REVIEW AND VERIFY ALL DIMENSIONS, SPECS, AND CONNECTIONS BEFORE CONSTRUCTION BEGINS.

ELECTRICAL SYSTEM CODE: SEC 2701
MECHANICAL SYSTEM CODE: SEC 3001
PLUMBING SYSTEM CODE: SEC 3001

Page 1 Cover Page
Page 2 Main Floor Plan
Page 3 Basement Plan
Page 4 Elevation Plan
Page 5 Typical Section Details
Page 6 Floor and Roof Framing Plan
Page 7 Whole House Section
Page 8 Cabinet & Sink Details
Page 9 Main Electrical
Page 10 Basement Electrical
Page 11 Misc Details

To the best of my knowledge these plans are shown to comply with current local or building specifications and any changes made on them after prints are made will be done at the owner's and/or builder's expense and responsibility. The contractor must verify all dimensions and construct drawings. SDS-CAD is not liable for errors since construction has begun. While every effort has been made in the preparation of this plan to avoid mistakes, the owner and/or contractor are urged to check all dimensions and other details prior to construction and be safety responsible thereafter. All dimensions and materials shown should be verified for your building by a certified building official.

BRICKED WALLS AND NOT BRICKED WALL OPTIONS:
Trace of exterior walls and exterior corners at each end of building wall as well as every 10' length to ease of the following:
• Minimum 6" x 8" x 16" concrete block, 2000 psi at each
• Minimum 4" x 8" x 16" concrete block, 2000 psi at each
• Continuous footing from floor to top

FOOTING SCHEDULE

HOUSE WALLS	18" x 18" Min
DECKS & PORCHES	18" x 12" Min
REARING WALL	20" x 12" Min
GARAGE WALL	18" x 12" Min

Min 2 #4 Rebar Horizontal on unbraced or compacted soil

CONCRETE:
1. All slabs are to be 4" concrete over 4" gravel unless otherwise noted on the plans.
2. Concrete to be ACI 3086, Type I cement, 2000 psi at 28 days, 1" maximum slump.
3. Rebaring to be A513M A513 bars with Fy=60 ksi temp 30 diameter minimum at 18" o.c. unless per ACI 308.
4. Concrete design based on Fy=2000 psi, Fc=2500 psi for quality only.
5. Anchor bolts shall be A307 embedded 7" minimum into concrete at minimum girth.

BASEMENT PLAN
SCALE 1/8"=1'

VENTING SCHEDULE

Range Hoods	Vent Through Roof
All Bath Fans	Vent to Exterior
Dryer Vent	Vent to Exterior

INSULATION SCHEDULE

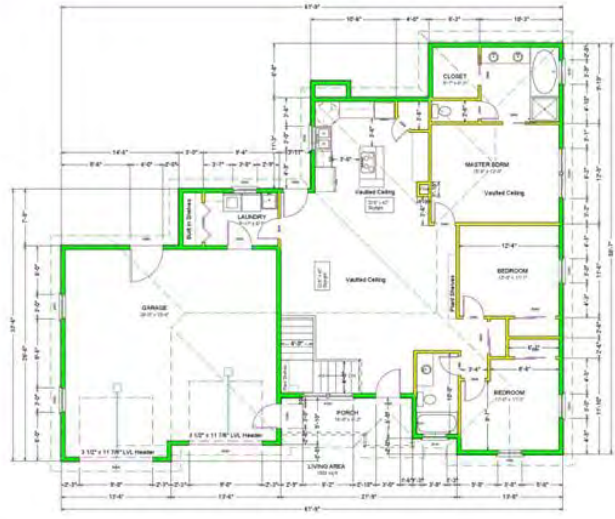
Ceilings	R-38 Min
Wall above grade	R-19 Min
Wall interior below grade	R-13 Min

DOOR SCHEDULE

NUMBER TO Y	FLOOR	FIN	TYPE	OPERATION
TS01	1	8000	7800 SF	CASCADE FRAME GARAGE DOOR
TS02	1	8000	7800 SF	DOOR
TS03	1	41000	7800 SF	BI-FOLD
TS04	1	42000	7800 SF	DOOR
TS05	1	42000	7800 SF	DOOR
TS06	1	42000	7800 SF	DOOR
TS07	1	42000	7800 SF	DOOR
TS08	1	42000	7800 SF	DOOR
TS09	1	42000	7800 SF	DOOR
TS10	1	42000	7800 SF	DOOR
TS11	1	42000	7800 SF	DOOR
TS12	1	42000	7800 SF	DOOR
TS13	1	42000	7800 SF	DOOR
TS14	1	42000	7800 SF	DOOR
TS15	1	42000	7800 SF	DOOR
TS16	1	42000	7800 SF	DOOR
TS17	1	42000	7800 SF	DOOR
TS18	1	42000	7800 SF	DOOR
TS19	1	42000	7800 SF	DOOR
TS20	1	42000	7800 SF	DOOR

WINDOW SCHEDULE

NUMBER TO Y	FLOOR	FIN	SIZE	DIMENSIONS	DESCRIPTION
WS01	1	1	3600	4800	RIGHT WINDOW
WS02	1	1	3600	3600	FIXED GLASS
WS03	1	1	3600	3600	DOUBLE HUNG
WS04	1	1	3600	3600	DOUBLE HUNG
WS05	1	1	3600	3600	DOUBLE HUNG



MAIN FLOOR PLAN
SCALE 1/8"=1'

File: Plan 101-101.dwg, Date: 10/10/2010, 10:10:10 AM, 10/10/2010, 10:10:10 AM, 10/10/2010, 10:10:10 AM
©2010 SDS-CAD Specialized Design Systems

RIGHT ELEVATION SCALE 1/8"=1'

REAR ELEVATION SCALE 1/8"=1'

LEFT ELEVATION SCALE 1/8"=1'

FRONT ELEVATION SCALE 1/8"=1'

PERSPECTIVE VIEWS

Residential Design
SDS-CAD Specialized Design Systems
11



Custom Home Design
By SDS-CAD Specialized Design Systems
Plan #103

To the best of my knowledge these plans are drawn to comply with owner's and/or builder's specifications and any changes made on them after prints are made will be done at the owner's and/or builder's expense and responsibility. The contractor shall verify all dimensions and enclosed drawing. SDS-CAD is not liable for errors once construction has begun. While every effort has been made in the preparation of this plan to avoid mistakes, the maker can not guarantee against human error. The contractor of the job must check all dimensions and other details prior to construction and be solely responsible thereafter. All calculations and member sizing should be verified for your building by a certified building official.

Page 1 Cover Page
Page 2 Main Floor Plan
Page 3 Basement Plan
Page 4 Elevation Plan
Page 5 Typical Section Details
Page 6 Floor and Roof Framing Plan
Page 7 Whole House Section
Page 8 Cabinet & Sill Details
Page 9 Main Electrical
Page 10 Basement Electrical
Page 11 Misc. Details

BUILDING CONTRACTOR/HOME OWNER TO REVIEW AND VERIFY ALL DIMENSIONS, SPECS, AND CONNECTIONS BEFORE CONSTRUCTION BEGINS.

ELECTRICAL SYSTEM CODE: SEC 2701
MECHANICAL SYSTEM CODE: SEC 2801
PLUMBING SYSTEM CODE: SEC 2901

SDS-CAD Specialized Design Systems
1111 17th Street, Suite 100, Boulder, CO 80502
781-444-4444
www.sds-cad.com

Basement Plan

Notes:

- All walls are to be 4" insulate over 8" girth unless otherwise noted on the plans.
- Concrete to be ACI 308. Type I concrete 3000 psi at 28 days. 4" minimum walls.
- Reinforcing to be #375 wall bars with 7' pitch for top 30' diameter minimum at 4' pitch or with per ACI 308.
- Concrete floor based on 4" 4000 psi. 10' dia pipe for supply line.
- Anchor bolts shall be A307 anchor 7" minimum into concrete in masonry grade.

FOOTING SCHEDULE

NO.	DESCRIPTION	TYPE	SIZE	DEPTH	REMARKS
1	FOUNDATION WALL	CONCRETE	8"	4'	4" INSULATION OVER
2	FOUNDATION WALL	CONCRETE	8"	4'	4" INSULATION OVER
3	FOUNDATION WALL	CONCRETE	8"	4'	4" INSULATION OVER
4	FOUNDATION WALL	CONCRETE	8"	4'	4" INSULATION OVER
5	FOUNDATION WALL	CONCRETE	8"	4'	4" INSULATION OVER
6	FOUNDATION WALL	CONCRETE	8"	4'	4" INSULATION OVER
7	FOUNDATION WALL	CONCRETE	8"	4'	4" INSULATION OVER
8	FOUNDATION WALL	CONCRETE	8"	4'	4" INSULATION OVER
9	FOUNDATION WALL	CONCRETE	8"	4'	4" INSULATION OVER
10	FOUNDATION WALL	CONCRETE	8"	4'	4" INSULATION OVER
11	FOUNDATION WALL	CONCRETE	8"	4'	4" INSULATION OVER
12	FOUNDATION WALL	CONCRETE	8"	4'	4" INSULATION OVER
13	FOUNDATION WALL	CONCRETE	8"	4'	4" INSULATION OVER
14	FOUNDATION WALL	CONCRETE	8"	4'	4" INSULATION OVER
15	FOUNDATION WALL	CONCRETE	8"	4'	4" INSULATION OVER
16	FOUNDATION WALL	CONCRETE	8"	4'	4" INSULATION OVER
17	FOUNDATION WALL	CONCRETE	8"	4'	4" INSULATION OVER
18	FOUNDATION WALL	CONCRETE	8"	4'	4" INSULATION OVER
19	FOUNDATION WALL	CONCRETE	8"	4'	4" INSULATION OVER
20	FOUNDATION WALL	CONCRETE	8"	4'	4" INSULATION OVER
21	FOUNDATION WALL	CONCRETE	8"	4'	4" INSULATION OVER
22	FOUNDATION WALL	CONCRETE	8"	4'	4" INSULATION OVER
23	FOUNDATION WALL	CONCRETE	8"	4'	4" INSULATION OVER
24	FOUNDATION WALL	CONCRETE	8"	4'	4" INSULATION OVER
25	FOUNDATION WALL	CONCRETE	8"	4'	4" INSULATION OVER
26	FOUNDATION WALL	CONCRETE	8"	4'	4" INSULATION OVER
27	FOUNDATION WALL	CONCRETE	8"	4'	4" INSULATION OVER
28	FOUNDATION WALL	CONCRETE	8"	4'	4" INSULATION OVER
29	FOUNDATION WALL	CONCRETE	8"	4'	4" INSULATION OVER
30	FOUNDATION WALL	CONCRETE	8"	4'	4" INSULATION OVER
31	FOUNDATION WALL	CONCRETE	8"	4'	4" INSULATION OVER
32	FOUNDATION WALL	CONCRETE	8"	4'	4" INSULATION OVER
33	FOUNDATION WALL	CONCRETE	8"	4'	4" INSULATION OVER
34	FOUNDATION WALL	CONCRETE	8"	4'	4" INSULATION OVER
35	FOUNDATION WALL	CONCRETE	8"	4'	4" INSULATION OVER
36	FOUNDATION WALL	CONCRETE	8"	4'	4" INSULATION OVER
37	FOUNDATION WALL	CONCRETE	8"	4'	4" INSULATION OVER
38	FOUNDATION WALL	CONCRETE	8"	4'	4" INSULATION OVER
39	FOUNDATION WALL	CONCRETE	8"	4'	4" INSULATION OVER
40	FOUNDATION WALL	CONCRETE	8"	4'	4" INSULATION OVER
41	FOUNDATION WALL	CONCRETE	8"	4'	4" INSULATION OVER
42	FOUNDATION WALL	CONCRETE	8"	4'	4" INSULATION OVER
43	FOUNDATION WALL	CONCRETE	8"	4'	4" INSULATION OVER
44	FOUNDATION WALL	CONCRETE	8"	4'	4" INSULATION OVER
45	FOUNDATION WALL	CONCRETE	8"	4'	4" INSULATION OVER
46	FOUNDATION WALL	CONCRETE	8"	4'	4" INSULATION OVER
47	FOUNDATION WALL	CONCRETE	8"	4'	4" INSULATION OVER
48	FOUNDATION WALL	CONCRETE	8"	4'	4" INSULATION OVER
49	FOUNDATION WALL	CONCRETE	8"	4'	4" INSULATION OVER
50	FOUNDATION WALL	CONCRETE	8"	4'	4" INSULATION OVER

VENTILATION SCHEDULE

NO.	DESCRIPTION	TYPE	SIZE	DEPTH	REMARKS
1	FOUNDATION WALL	CONCRETE	8"	4'	4" INSULATION OVER
2	FOUNDATION WALL	CONCRETE	8"	4'	4" INSULATION OVER
3	FOUNDATION WALL	CONCRETE	8"	4'	4" INSULATION OVER
4	FOUNDATION WALL	CONCRETE	8"	4'	4" INSULATION OVER
5	FOUNDATION WALL	CONCRETE	8"	4'	4" INSULATION OVER
6	FOUNDATION WALL	CONCRETE	8"	4'	4" INSULATION OVER
7	FOUNDATION WALL	CONCRETE	8"	4'	4" INSULATION OVER
8	FOUNDATION WALL	CONCRETE	8"	4'	4" INSULATION OVER
9	FOUNDATION WALL	CONCRETE	8"	4'	4" INSULATION OVER
10	FOUNDATION WALL	CONCRETE	8"	4'	4" INSULATION OVER
11	FOUNDATION WALL	CONCRETE	8"	4'	4" INSULATION OVER
12	FOUNDATION WALL	CONCRETE	8"	4'	4" INSULATION OVER
13	FOUNDATION WALL	CONCRETE	8"	4'	4" INSULATION OVER
14	FOUNDATION WALL	CONCRETE	8"	4'	4" INSULATION OVER
15	FOUNDATION WALL	CONCRETE	8"	4'	4" INSULATION OVER
16	FOUNDATION WALL	CONCRETE	8"	4'	4" INSULATION OVER
17	FOUNDATION WALL	CONCRETE	8"	4'	4" INSULATION OVER
18	FOUNDATION WALL	CONCRETE	8"	4'	4" INSULATION OVER
19	FOUNDATION WALL	CONCRETE	8"	4'	4" INSULATION OVER
20	FOUNDATION WALL	CONCRETE	8"	4'	4" INSULATION OVER
21	FOUNDATION WALL	CONCRETE	8"	4'	4" INSULATION OVER
22	FOUNDATION WALL	CONCRETE	8"	4'	4" INSULATION OVER
23	FOUNDATION WALL	CONCRETE	8"	4'	4" INSULATION OVER
24	FOUNDATION WALL	CONCRETE	8"	4'	4" INSULATION OVER
25	FOUNDATION WALL	CONCRETE	8"	4'	4" INSULATION OVER
26	FOUNDATION WALL	CONCRETE	8"	4'	4" INSULATION OVER
27	FOUNDATION WALL	CONCRETE	8"	4'	4" INSULATION OVER
28	FOUNDATION WALL	CONCRETE	8"	4'	4" INSULATION OVER
29	FOUNDATION WALL	CONCRETE	8"	4'	4" INSULATION OVER
30	FOUNDATION WALL	CONCRETE	8"	4'	4" INSULATION OVER
31	FOUNDATION WALL	CONCRETE	8"	4'	4" INSULATION OVER
32	FOUNDATION WALL	CONCRETE	8"	4'	4" INSULATION OVER
33	FOUNDATION WALL	CONCRETE	8"	4'	4" INSULATION OVER
34	FOUNDATION WALL	CONCRETE	8"	4'	4" INSULATION OVER
35	FOUNDATION WALL	CONCRETE	8"	4'	4" INSULATION OVER
36	FOUNDATION WALL	CONCRETE	8"	4'	4" INSULATION OVER
37	FOUNDATION WALL	CONCRETE	8"	4'	4" INSULATION OVER
38	FOUNDATION WALL	CONCRETE	8"	4'	4" INSULATION OVER
39	FOUNDATION WALL	CONCRETE	8"	4'	4" INSULATION OVER
40	FOUNDATION WALL	CONCRETE	8"	4'	4" INSULATION OVER
41	FOUNDATION WALL	CONCRETE	8"	4'	4" INSULATION OVER
42	FOUNDATION WALL	CONCRETE	8"	4'	4" INSULATION OVER
43	FOUNDATION WALL	CONCRETE	8"	4'	4" INSULATION OVER
44	FOUNDATION WALL	CONCRETE	8"	4'	4" INSULATION OVER
45	FOUNDATION WALL	CONCRETE	8"	4'	4" INSULATION OVER
46	FOUNDATION WALL	CONCRETE	8"	4'	4" INSULATION OVER
47	FOUNDATION WALL	CONCRETE	8"	4'	4" INSULATION OVER
48	FOUNDATION WALL	CONCRETE	8"	4'	4" INSULATION OVER
49	FOUNDATION WALL	CONCRETE	8"	4'	4" INSULATION OVER
50	FOUNDATION WALL	CONCRETE	8"	4'	4" INSULATION OVER

INSULATION SCHEDULE

NO.	DESCRIPTION	TYPE	SIZE	DEPTH	REMARKS
1	FOUNDATION WALL	CONCRETE	8"	4'	4" INSULATION OVER
2	FOUNDATION WALL	CONCRETE	8"	4'	4" INSULATION OVER
3	FOUNDATION WALL	CONCRETE	8"	4'	4" INSULATION OVER
4	FOUNDATION WALL	CONCRETE	8"	4'	4" INSULATION OVER
5	FOUNDATION WALL	CONCRETE	8"	4'	4" INSULATION OVER
6	FOUNDATION WALL	CONCRETE	8"	4'	4" INSULATION OVER
7	FOUNDATION WALL	CONCRETE	8"	4'	4" INSULATION OVER
8	FOUNDATION WALL	CONCRETE	8"	4'	4" INSULATION OVER
9	FOUNDATION WALL	CONCRETE	8"	4'	4" INSULATION OVER
10	FOUNDATION WALL	CONCRETE	8"	4'	4" INSULATION OVER
11	FOUNDATION WALL	CONCRETE	8"	4'	4" INSULATION OVER
12	FOUNDATION WALL	CONCRETE	8"	4'	4" INSULATION OVER
13	FOUNDATION WALL	CONCRETE	8"	4'	4" INSULATION OVER
14	FOUNDATION WALL	CONCRETE	8"	4'	4" INSULATION OVER
15	FOUNDATION WALL	CONCRETE	8"	4'	4" INSULATION OVER
16	FOUNDATION WALL	CONCRETE	8"	4'	4" INSULATION OVER
17	FOUNDATION WALL	CONCRETE	8"	4'	4" INSULATION OVER
18	FOUNDATION WALL	CONCRETE	8"	4'	4" INSULATION OVER
19	FOUNDATION WALL	CONCRETE	8"	4'	4" INSULATION OVER
20	FOUNDATION WALL	CONCRETE	8"	4'	4" INSULATION OVER
21	FOUNDATION WALL	CONCRETE	8"	4'	4" INSULATION OVER
22	FOUNDATION WALL	CONCRETE	8"	4'	4" INSULATION OVER
23	FOUNDATION WALL	CONCRETE	8"	4'	4" INSULATION OVER
24	FOUNDATION WALL	CONCRETE	8"	4'	4" INSULATION OVER
25	FOUNDATION WALL	CONCRETE	8"	4'	4" INSULATION OVER
26	FOUNDATION WALL	CONCRETE	8"	4'	4" INSULATION OVER
27	FOUNDATION WALL	CONCRETE	8"	4'	4" INSULATION OVER
28	FOUNDATION WALL	CONCRETE	8"	4'	4" INSULATION OVER
29	FOUNDATION WALL	CONCRETE	8"	4'	4" INSULATION OVER
30	FOUNDATION WALL	CONCRETE	8"	4'	4" INSULATION OVER
31	FOUNDATION WALL	CONCRETE	8"	4'	4" INSULATION OVER
32	FOUNDATION WALL	CONCRETE	8"	4'	4" INSULATION OVER
33	FOUNDATION WALL	CONCRETE	8"	4'	4" INSULATION OVER
34	FOUNDATION WALL	CONCRETE	8"	4'	4" INSULATION OVER
35	FOUNDATION WALL	CONCRETE	8"	4'	4" INSULATION OVER
36	FOUNDATION WALL	CONCRETE	8"	4'	4" INSULATION OVER
37	FOUNDATION WALL	CONCRETE	8"	4'	4" INSULATION OVER
38	FOUNDATION WALL	CONCRETE	8"	4'	4" INSULATION OVER
39	FOUNDATION WALL	CONCRETE	8"	4'	4" INSULATION OVER
40	FOUNDATION WALL	CONCRETE	8"	4'	4" INSULATION OVER
41	FOUNDATION WALL	CONCRETE	8"	4'	4" INSULATION OVER
42	FOUNDATION WALL	CONCRETE	8"	4'	4" INSULATION OVER
43	FOUNDATION WALL	CONCRETE	8"	4'	4" INSULATION OVER
44	FOUNDATION WALL	CONCRETE	8"	4'	4" INSULATION OVER
45	FOUNDATION WALL	CONCRETE	8"	4'	4" INSULATION OVER
46	FOUNDATION WALL	CONCRETE	8"	4'	4" INSULATION OVER
47	FOUNDATION WALL	CONCRETE	8"	4'	4" INSULATION OVER
48	FOUNDATION WALL	CONCRETE	8"	4'	4" INSULATION OVER
49	FOUNDATION WALL	CONCRETE	8"	4'	4" INSULATION OVER
50	FOUNDATION WALL	CONCRETE	8"	4'	4" INSULATION OVER

SDS-CAD Specialized Design Systems
1111 17th Street, Suite 100, Boulder, CO 80502
781-444-4444
www.sds-cad.com

MAIN FLOOR PLAN
SCALE 1/8"=1'

LOFT PLAN
SCALE 1/8"=1'

SDS-CAD Specialized Design Systems
1111 17th Street, Suite 100, Boulder, CO 80502
781-444-4444
www.sds-cad.com

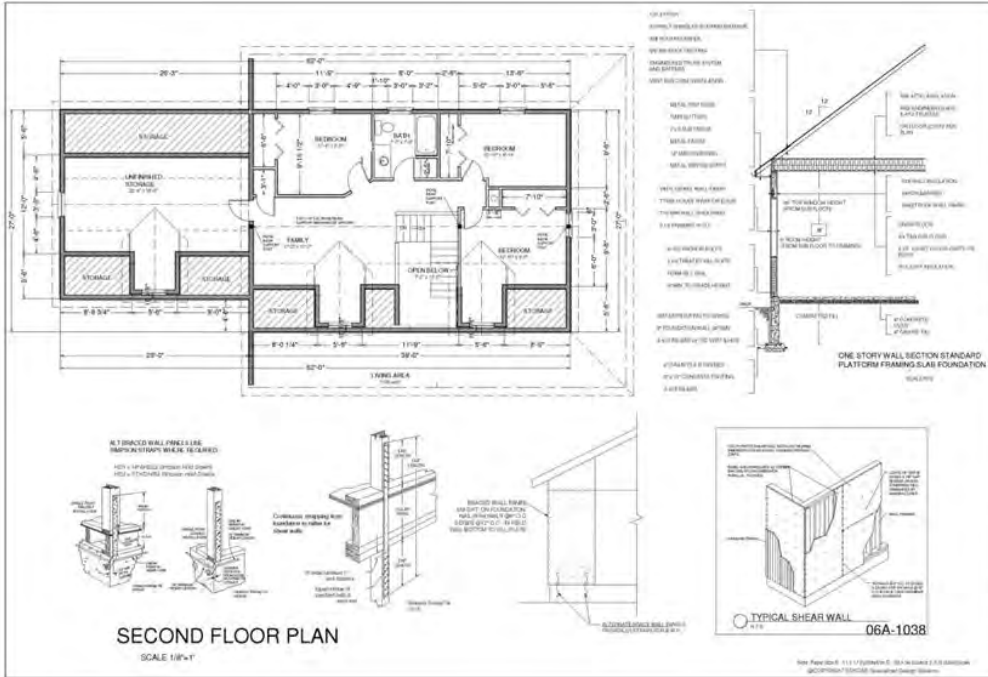
RIGHT ELEVATION
SCALE 1/8"=1'

REAR ELEVATION
SCALE 1/8"=1'

LEFT ELEVATION
SCALE 1/8"=1'

FRONT ELEVATION
SCALE 1/8"=1'

SDS-CAD Specialized Design Systems
1111 17th Street, Suite 100, Boulder, CO 80502
781-444-4444
www.sds-cad.com



Residential Design
SDS-CAD Specialized Design Systems
11177 Spectrum Dr., Suite 100, Houston, TX 77057
713-270-8800
www.sds-cad.com

Revisions for:

NO.	DATE	DESCRIPTION
1		ISSUED FOR PERMITS
2		ISSUED FOR PERMITS
3		ISSUED FOR PERMITS
4		ISSUED FOR PERMITS
5		ISSUED FOR PERMITS
6		ISSUED FOR PERMITS
7		ISSUED FOR PERMITS
8		ISSUED FOR PERMITS
9		ISSUED FOR PERMITS
10		ISSUED FOR PERMITS
11		ISSUED FOR PERMITS
12		ISSUED FOR PERMITS
13		ISSUED FOR PERMITS
14		ISSUED FOR PERMITS
15		ISSUED FOR PERMITS
16		ISSUED FOR PERMITS
17		ISSUED FOR PERMITS
18		ISSUED FOR PERMITS
19		ISSUED FOR PERMITS
20		ISSUED FOR PERMITS



HOMEOwner & CONTRACTOR: TO VERIFY ALL DIMENSIONS, STRUCTURAL DETAILS, AND BUILDING CODES, AND GRADE REQUIREMENTS.

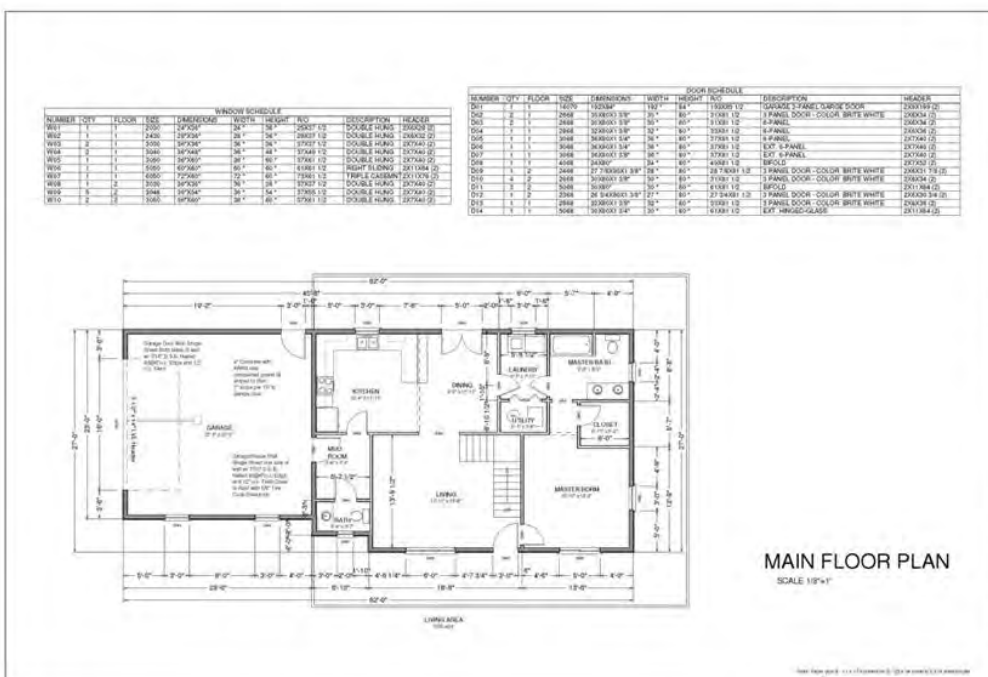
**Custom Home Design
Plan #105
By SDS-CAD Specialized Design Systems**

Page 1: Cover Page
Page 2: Main Floor Plan
Page 3: Foundation Plan
Page 4: Second Floor Plan
Page 5: Elevation Plan
Page 6: Floor and Roof Framing Plan
Page 7: Whole House Section
Page 8: Cabinet & Island Framing Plan
Page 9: Main Electrical
Page 10: Insulated Floor Electrical
Page 11: Roof Framing Plan

BUILDING CONTRACTOR/HOME OWNER TO REVIEW AND VERIFY ALL DIMENSIONS, SPECIFICS AND CONNECTIONS BEFORE CONSTRUCTION BEGINS.

ELECTRICAL SYSTEM CODE: SEC-2011
MECHANICAL SYSTEM CODE: SEC-2009
PLUMBING SYSTEM CODE: SEC-2001

Residential Design
SDS-CAD Specialized Design Systems
11177 Spectrum Dr., Suite 100, Houston, TX 77057
713-270-8800
www.sds-cad.com



Residential Design
SDS-CAD Specialized Design Systems
11177 Spectrum Dr., Suite 100, Houston, TX 77057
713-270-8800
www.sds-cad.com

Revisions for:

NO.	DATE	DESCRIPTION
1		ISSUED FOR PERMITS
2		ISSUED FOR PERMITS
3		ISSUED FOR PERMITS
4		ISSUED FOR PERMITS
5		ISSUED FOR PERMITS
6		ISSUED FOR PERMITS
7		ISSUED FOR PERMITS
8		ISSUED FOR PERMITS
9		ISSUED FOR PERMITS
10		ISSUED FOR PERMITS
11		ISSUED FOR PERMITS
12		ISSUED FOR PERMITS
13		ISSUED FOR PERMITS
14		ISSUED FOR PERMITS
15		ISSUED FOR PERMITS
16		ISSUED FOR PERMITS
17		ISSUED FOR PERMITS
18		ISSUED FOR PERMITS
19		ISSUED FOR PERMITS
20		ISSUED FOR PERMITS

LEFT ELEVATION
SCALE 1/8"=1'-0"

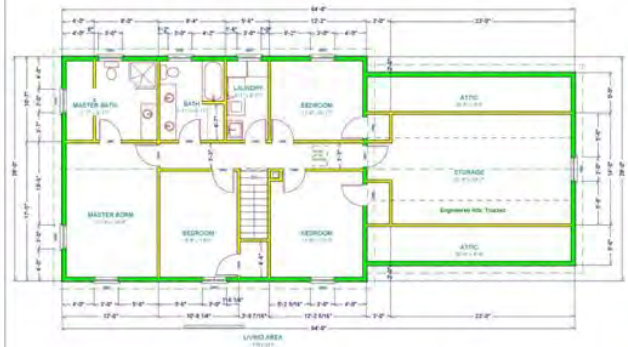
REAR ELEVATION
SCALE 1/8"=1'-0"

RIGHT ELEVATION
SCALE 1/8"=1'-0"

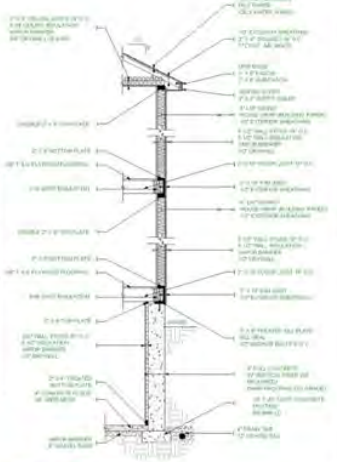
3D PICTORIALS
1/8"=1'-0"

FRONT ELEVATION
SCALE 1/8"=1'-0"

Residential Design
SDS-CAD Specialized Design Systems
11177 Spectrum Dr., Suite 100, Houston, TX 77057
713-270-8800
www.sds-cad.com



SECOND FLOOR PLAN
SCALE 1/8"=1'



Typical 2 Story Section

Plan No. 208-B, 11-17-17 Printed at: 11:14 AM on 11/17/2017
©2017 SDS-CAD Specialized Design Systems

Structural Design

SDS-CAD Specialized Design Systems

10



Custom Home Design
Plan #112
By SDS-CAD Specialized Design Systems

To the best of my knowledge these plans are drawn to comply with owner's and/or builder's specifications and any changes made on them after prints are made will be done at the owner's and / or builder's expense and responsibility. The contractor shall verify all dimensions and enclosed drawing. SDS-CAD is not liable for errors once construction has begun. While every effort has been made in the preparation of this plan to avoid mistakes, the maker can not guarantee against human error! The contractor of the job must check all dimensions and other details prior to construction and be solely responsible therefor! All specifications and members using should be verified for your building by a certified building official.

BUILDING CONTRACTOR/HOME OWNER TO REVIEW AND VERIFY ALL DIMENSIONS, SPECS. AND CONNECTIONS BEFORE CONSTRUCTION BEGINS. HOME TO BE BUILT AS PER IRC 2003 OR CURRENT CODE.

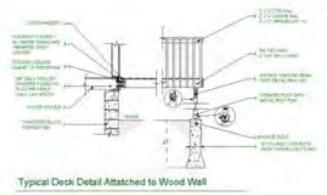
ELECTRICAL SYSTEM CODE: SEC-2001
MECHANICAL SYSTEM CODE: SEC-2001
PLUMBING SYSTEM CODE: SEC-2001

- Page 1 Cover Page
- Page 2 Main
- Page 3 Foundation Plan
- Page 4 Second Floor Plan
- Page 5 Elevation Plan
- Page 6 Floor and Roof Framing Plan
- Page 7 Whole House Section
- Page 8 Cabinet & Sink Details
- Page 9 Main Floor Electrical
- Page 10 Basement & Second Floor Electrical

Structural Design

SDS-CAD Specialized Design Systems

10



Typical Deck Detail Attached to Wood Wall

NUMBER	QTY	FLOOR	SIZE	DESCRIPTION
001	1	1	20x8	2xRAIL - WOODGRAN CHERRY LIGHT-R
002	1	1	20x8	2xRAIL - WOODGRAN CHERRY LIGHT-R
003	1	1	20x8	2xRAIL - WOODGRAN CHERRY LIGHT-R
004	2	1	20x8	2xRAIL - WOODGRAN CHERRY LIGHT-R
005	1	1	20x8	2xRAIL - WOODGRAN CHERRY LIGHT-R
006	1	1	20x8	2xRAIL - WOODGRAN CHERRY LIGHT-R
007	1	1	20x8	2xRAIL - WOODGRAN CHERRY LIGHT-R
008	1	1	20x8	2xRAIL - WOODGRAN CHERRY LIGHT-R
009	2	1	10x6	10x6P - GARAGE 2xRAIL, 2xRAIL DOOR
010	2	1	20x8	2xRAIL - WOODGRAN CHERRY LIGHT-R
011	2	1	20x8	2xRAIL - WOODGRAN CHERRY LIGHT-R
012	1	1	20x8	2xRAIL - WOODGRAN CHERRY LIGHT-R
013	1	1	20x8	2xRAIL - WOODGRAN CHERRY LIGHT-R

NUMBER	QTY	FLOOR	SIZE	DESCRIPTION
W01	1	1	8x8	8x8x8' SINGLE HUNG
W02	1	1	20x10	20x10x8' SINGLE HUNG
W03	3	1	20x8	20x8x8' SINGLE HUNG
W04	2	1	20x8	20x8x8' SINGLE HUNG
W05	8	1	20x8	20x8x8' SINGLE HUNG
W06	8	1	40x8	40x8x8' SINGLE HUNG
W07	2	1	20x8	20x8x8' SINGLE HUNG

FOOTING SCHEDULE

HOUSE WALLS 20" x 8" Min.
DECKS & PORCHES 18" x 8" Min.
REAR/WALL 20" x 8" Min.
GARAGE WALL 18" x 8" Min.

Min 2 #4 Rebar Horizontal on undisturbed or compacted soil

VENTING SCHEDULE

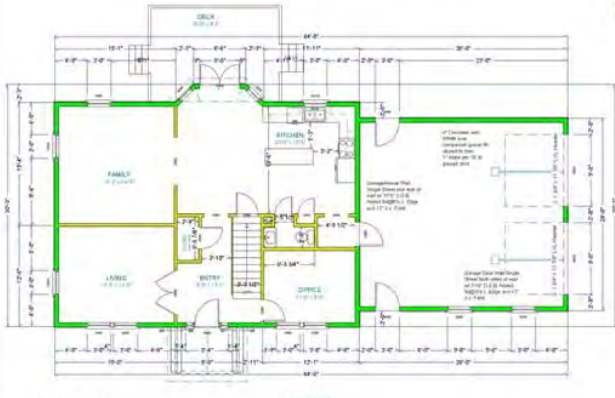
Range Hoods Vent Through Roof
All Bath Fans Vent to Exterior
Dryer Vent Vent to Exterior

INSULATION SCHEDULE

Attic (Conditioned Area / 30) PROVIDE 1" MIN. AIR GAP AT SIDES WITH INSULATION. BATTLES TYP. AT ALL TRUSS BAYS.
PROVIDE SHABLE VENTS ALL SHABLE ENDS.
PROVIDE SHABLE ROOF VENTS ON BACKSIDE OF ROOPLINE ABOVE CONDITIONED AREA.

INSULATION SCHEDULE

Ceiling R-38 Min.
Wall above grade R-19 Min.
Wall interior below grade R-13 Min.



MAIN FLOOR PLAN
SCALE 1/8"=1'

Plan No. 208-B, 11-17-17 Printed at: 11:14 AM on 11/17/2017
©2017 SDS-CAD Specialized Design Systems

Structural Design

SDS-CAD Specialized Design Systems

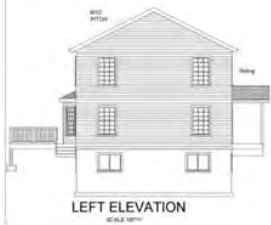
10



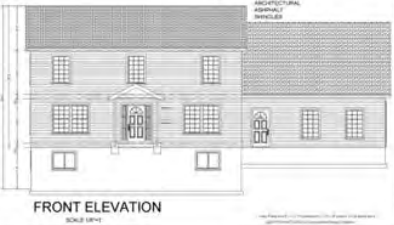
RIGHT ELEVATION
SCALE 1/8"=1'



REAR ELEVATION
SCALE 1/8"=1'



LEFT ELEVATION
SCALE 1/8"=1'

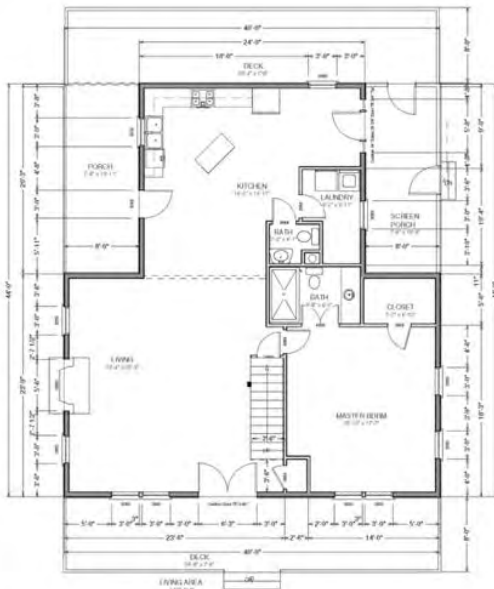
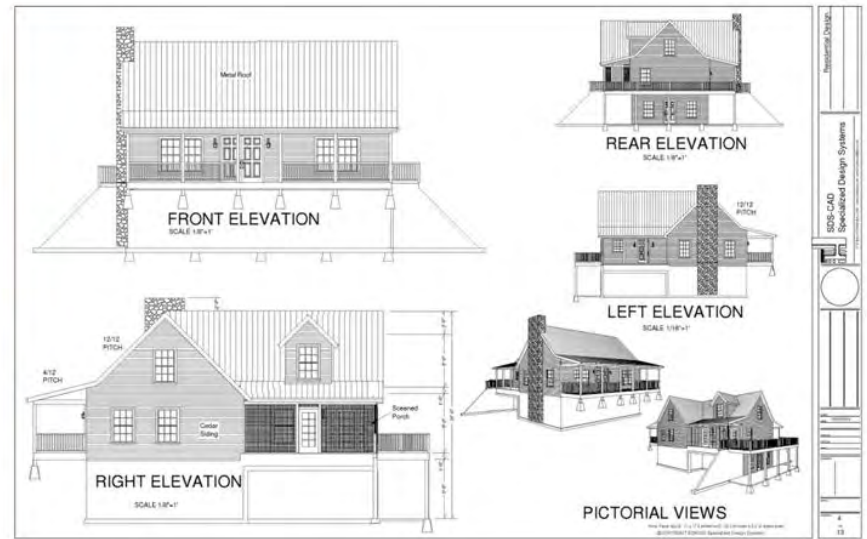


FRONT ELEVATION
SCALE 1/8"=1'

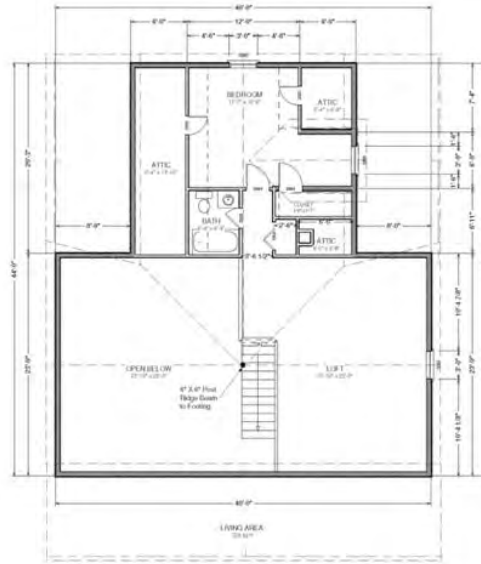
Structural Design

SDS-CAD Specialized Design Systems

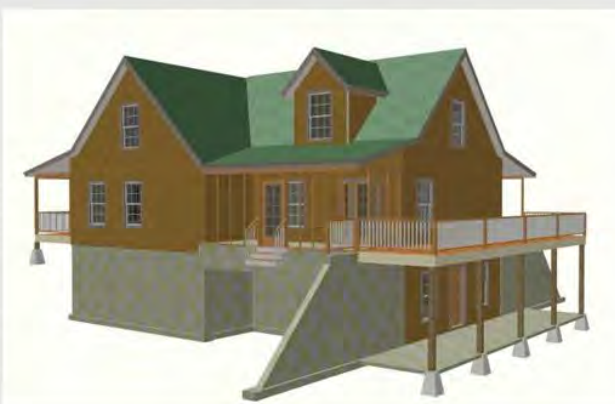
10



MAIN FLOOR PLAN
SCALE 1/8"=1"



SECOND FLOOR PLAN
SCALE 1/8"=1"



Residential Design
SDS-CAD Specialized Design Systems

Residential Design
SDS-CAD Specialized Design Systems



**Custom Home Design
 Plan #125
 By SDS-CAD Specialized Design Systems**

To the best of my knowledge these plans are drawn to comply with owner's and/or builder's specifications and any changes made on them after prints are made will be done at the owner's and/or builder's expense and responsibility. The contractor shall verify all dimensions and enclosed drawing. SDS-CAD is not liable for errors once construction has begun. While every effort has been made in the preparation of this plan to avoid mistakes, the maker can not guarantee against human error. The contractor of the job must check all dimensions and other details prior to construction and be solely responsible thereafter. All calculations and member sizing should be verified for your building by a certified building official.

BUILDING CONTRACTOR/HOME OWNER TO REVIEW AND VERIFY ALL DIMENSIONS, SPECS, AND CONNECTIONS BEFORE CONSTRUCTION BEGINS.
 BUILD PER IRC2003 OR LOCAL CODE REQUIREMENTS
 ELECTRICAL SYSTEM CODE: SEC 2701
 MECHANICAL SYSTEM CODE: SEC 2801
 PLUMBING SYSTEM CODE: SEC 2901

- Page 1 Cover Page
- Page 2 Main Floor Plan
- Page 3 Foundation Plan
- Page 4 Elevation Plan
- Page 5 Floor and Roof Framing Plan
- Page 6 Whole House Section
- Page 7 Cabinet Details
- Page 8 Main Electrical

Notes: Page 12/11/17 © J. B. Hays, www.sds-cad.com (SDS-CAD Specialized Design Systems)
 06A-1038 (SDS-CAD Specialized Design Systems)



BRACED WALL PIER:
 2x6 BFT ON FOUNDATION
 MAX. SPACING @ 24" O.C.
 EDGES @ 24" O.C. IN FIELD
 NAIL SYSTEM TO SHEET PILE

ALTERNATE BRACED WALL OPTION:
 For any walls less than 48"

TYPICAL SHEAR WALL
 06A-1038

MAIN FLOOR PLAN
 SCALE 1/8"=1'

BRACED WALLS AND ALT BRACED WALL OPTIONS
 Brace all exterior walls and cross-stud partitions at each end of building and at least every 25' of length by one of the following:
 a. Simpson WB 126 wall bracing with 3-16d nails at each end and 1-8d nails at each stud.
 b. Plywood sheathing of a minimum thickness of 2/8" inch.
 c. Continuous bracing from floor to floor.

HQ1 = 1/2" x 4" x 24" Simpson Hold Downs
HQ2 = 3/4" x 4" x 24" Simpson Hold Downs

INSULATION SCHEDULE

Roofings	R-38 Min
Wall above grade	R-19 Min
Wall interior below grade	R-13 Min

VENTING SCHEDULE

Range Hoods	Vent Through Roof
All Bath Fans	Vent to Exterior
Dryer Vent	Vent to Exterior
Crawl Space	Vent per Code

LEFT ELEVATION

REAR ELEVATION

FRONT ELEVATION

RIGHT ELEVATION

PERSPECTIVE VIEWS

Electrical Notes:

1. Refer to approved plans to locate all items.
2. Provide 20' of 1/2" EMT or equivalent pipe for conduit in finished basements.
3. Provide 1/2" EMT or equivalent pipe for conduit in unfinished basements.
4. Provide 1/2" EMT or equivalent pipe for conduit in attics.
5. Provide 1/2" EMT or equivalent pipe for conduit in crawl spaces.
6. Provide 1/2" EMT or equivalent pipe for conduit in garages.
7. Provide 1/2" EMT or equivalent pipe for conduit in porches.
8. Provide 1/2" EMT or equivalent pipe for conduit in sunrooms.
9. Provide 1/2" EMT or equivalent pipe for conduit in decks.
10. Provide 1/2" EMT or equivalent pipe for conduit in patios.
11. Provide 1/2" EMT or equivalent pipe for conduit in pergolas.
12. Provide 1/2" EMT or equivalent pipe for conduit in gazebos.
13. Provide 1/2" EMT or equivalent pipe for conduit in sheds.
14. Provide 1/2" EMT or equivalent pipe for conduit in barns.
15. Provide 1/2" EMT or equivalent pipe for conduit in stables.
16. Provide 1/2" EMT or equivalent pipe for conduit in equestrian arenas.
17. Provide 1/2" EMT or equivalent pipe for conduit in swimming pools.
18. Provide 1/2" EMT or equivalent pipe for conduit in hot tubs.
19. Provide 1/2" EMT or equivalent pipe for conduit in saunas.
20. Provide 1/2" EMT or equivalent pipe for conduit in spas.
21. Provide 1/2" EMT or equivalent pipe for conduit in hot tubs.
22. Provide 1/2" EMT or equivalent pipe for conduit in saunas.
23. Provide 1/2" EMT or equivalent pipe for conduit in spas.
24. Provide 1/2" EMT or equivalent pipe for conduit in hot tubs.
25. Provide 1/2" EMT or equivalent pipe for conduit in saunas.
26. Provide 1/2" EMT or equivalent pipe for conduit in spas.
27. Provide 1/2" EMT or equivalent pipe for conduit in hot tubs.
28. Provide 1/2" EMT or equivalent pipe for conduit in saunas.
29. Provide 1/2" EMT or equivalent pipe for conduit in spas.
30. Provide 1/2" EMT or equivalent pipe for conduit in hot tubs.
31. Provide 1/2" EMT or equivalent pipe for conduit in saunas.
32. Provide 1/2" EMT or equivalent pipe for conduit in spas.
33. Provide 1/2" EMT or equivalent pipe for conduit in hot tubs.
34. Provide 1/2" EMT or equivalent pipe for conduit in saunas.
35. Provide 1/2" EMT or equivalent pipe for conduit in spas.
36. Provide 1/2" EMT or equivalent pipe for conduit in hot tubs.
37. Provide 1/2" EMT or equivalent pipe for conduit in saunas.
38. Provide 1/2" EMT or equivalent pipe for conduit in spas.
39. Provide 1/2" EMT or equivalent pipe for conduit in hot tubs.
40. Provide 1/2" EMT or equivalent pipe for conduit in saunas.
41. Provide 1/2" EMT or equivalent pipe for conduit in spas.
42. Provide 1/2" EMT or equivalent pipe for conduit in hot tubs.
43. Provide 1/2" EMT or equivalent pipe for conduit in saunas.
44. Provide 1/2" EMT or equivalent pipe for conduit in spas.
45. Provide 1/2" EMT or equivalent pipe for conduit in hot tubs.
46. Provide 1/2" EMT or equivalent pipe for conduit in saunas.
47. Provide 1/2" EMT or equivalent pipe for conduit in spas.
48. Provide 1/2" EMT or equivalent pipe for conduit in hot tubs.
49. Provide 1/2" EMT or equivalent pipe for conduit in saunas.
50. Provide 1/2" EMT or equivalent pipe for conduit in spas.

Electrical Schedule:

NO.	TYPE	DESCRIPTION	REMARKS
1	Panel	100 AMP 240V 1-POLE MAIN SERVICE PANEL	1-POLE MAIN SERVICE PANEL
2	Panel	20 AMP 120V 1-POLE MAIN SERVICE PANEL	20 AMP 120V 1-POLE MAIN SERVICE PANEL
3	Panel	20 AMP 120V 1-POLE MAIN SERVICE PANEL	20 AMP 120V 1-POLE MAIN SERVICE PANEL
4	Panel	20 AMP 120V 1-POLE MAIN SERVICE PANEL	20 AMP 120V 1-POLE MAIN SERVICE PANEL
5	Panel	20 AMP 120V 1-POLE MAIN SERVICE PANEL	20 AMP 120V 1-POLE MAIN SERVICE PANEL
6	Panel	20 AMP 120V 1-POLE MAIN SERVICE PANEL	20 AMP 120V 1-POLE MAIN SERVICE PANEL
7	Panel	20 AMP 120V 1-POLE MAIN SERVICE PANEL	20 AMP 120V 1-POLE MAIN SERVICE PANEL
8	Panel	20 AMP 120V 1-POLE MAIN SERVICE PANEL	20 AMP 120V 1-POLE MAIN SERVICE PANEL
9	Panel	20 AMP 120V 1-POLE MAIN SERVICE PANEL	20 AMP 120V 1-POLE MAIN SERVICE PANEL
10	Panel	20 AMP 120V 1-POLE MAIN SERVICE PANEL	20 AMP 120V 1-POLE MAIN SERVICE PANEL
11	Panel	20 AMP 120V 1-POLE MAIN SERVICE PANEL	20 AMP 120V 1-POLE MAIN SERVICE PANEL
12	Panel	20 AMP 120V 1-POLE MAIN SERVICE PANEL	20 AMP 120V 1-POLE MAIN SERVICE PANEL
13	Panel	20 AMP 120V 1-POLE MAIN SERVICE PANEL	20 AMP 120V 1-POLE MAIN SERVICE PANEL
14	Panel	20 AMP 120V 1-POLE MAIN SERVICE PANEL	20 AMP 120V 1-POLE MAIN SERVICE PANEL
15	Panel	20 AMP 120V 1-POLE MAIN SERVICE PANEL	20 AMP 120V 1-POLE MAIN SERVICE PANEL
16	Panel	20 AMP 120V 1-POLE MAIN SERVICE PANEL	20 AMP 120V 1-POLE MAIN SERVICE PANEL
17	Panel	20 AMP 120V 1-POLE MAIN SERVICE PANEL	20 AMP 120V 1-POLE MAIN SERVICE PANEL
18	Panel	20 AMP 120V 1-POLE MAIN SERVICE PANEL	20 AMP 120V 1-POLE MAIN SERVICE PANEL
19	Panel	20 AMP 120V 1-POLE MAIN SERVICE PANEL	20 AMP 120V 1-POLE MAIN SERVICE PANEL
20	Panel	20 AMP 120V 1-POLE MAIN SERVICE PANEL	20 AMP 120V 1-POLE MAIN SERVICE PANEL
21	Panel	20 AMP 120V 1-POLE MAIN SERVICE PANEL	20 AMP 120V 1-POLE MAIN SERVICE PANEL
22	Panel	20 AMP 120V 1-POLE MAIN SERVICE PANEL	20 AMP 120V 1-POLE MAIN SERVICE PANEL
23	Panel	20 AMP 120V 1-POLE MAIN SERVICE PANEL	20 AMP 120V 1-POLE MAIN SERVICE PANEL
24	Panel	20 AMP 120V 1-POLE MAIN SERVICE PANEL	20 AMP 120V 1-POLE MAIN SERVICE PANEL
25	Panel	20 AMP 120V 1-POLE MAIN SERVICE PANEL	20 AMP 120V 1-POLE MAIN SERVICE PANEL
26	Panel	20 AMP 120V 1-POLE MAIN SERVICE PANEL	20 AMP 120V 1-POLE MAIN SERVICE PANEL
27	Panel	20 AMP 120V 1-POLE MAIN SERVICE PANEL	20 AMP 120V 1-POLE MAIN SERVICE PANEL
28	Panel	20 AMP 120V 1-POLE MAIN SERVICE PANEL	20 AMP 120V 1-POLE MAIN SERVICE PANEL
29	Panel	20 AMP 120V 1-POLE MAIN SERVICE PANEL	20 AMP 120V 1-POLE MAIN SERVICE PANEL
30	Panel	20 AMP 120V 1-POLE MAIN SERVICE PANEL	20 AMP 120V 1-POLE MAIN SERVICE PANEL
31	Panel	20 AMP 120V 1-POLE MAIN SERVICE PANEL	20 AMP 120V 1-POLE MAIN SERVICE PANEL
32	Panel	20 AMP 120V 1-POLE MAIN SERVICE PANEL	20 AMP 120V 1-POLE MAIN SERVICE PANEL
33	Panel	20 AMP 120V 1-POLE MAIN SERVICE PANEL	20 AMP 120V 1-POLE MAIN SERVICE PANEL
34	Panel	20 AMP 120V 1-POLE MAIN SERVICE PANEL	20 AMP 120V 1-POLE MAIN SERVICE PANEL
35	Panel	20 AMP 120V 1-POLE MAIN SERVICE PANEL	20 AMP 120V 1-POLE MAIN SERVICE PANEL
36	Panel	20 AMP 120V 1-POLE MAIN SERVICE PANEL	20 AMP 120V 1-POLE MAIN SERVICE PANEL
37	Panel	20 AMP 120V 1-POLE MAIN SERVICE PANEL	20 AMP 120V 1-POLE MAIN SERVICE PANEL
38	Panel	20 AMP 120V 1-POLE MAIN SERVICE PANEL	20 AMP 120V 1-POLE MAIN SERVICE PANEL
39	Panel	20 AMP 120V 1-POLE MAIN SERVICE PANEL	20 AMP 120V 1-POLE MAIN SERVICE PANEL
40	Panel	20 AMP 120V 1-POLE MAIN SERVICE PANEL	20 AMP 120V 1-POLE MAIN SERVICE PANEL
41	Panel	20 AMP 120V 1-POLE MAIN SERVICE PANEL	20 AMP 120V 1-POLE MAIN SERVICE PANEL
42	Panel	20 AMP 120V 1-POLE MAIN SERVICE PANEL	20 AMP 120V 1-POLE MAIN SERVICE PANEL
43	Panel	20 AMP 120V 1-POLE MAIN SERVICE PANEL	20 AMP 120V 1-POLE MAIN SERVICE PANEL
44	Panel	20 AMP 120V 1-POLE MAIN SERVICE PANEL	20 AMP 120V 1-POLE MAIN SERVICE PANEL
45	Panel	20 AMP 120V 1-POLE MAIN SERVICE PANEL	20 AMP 120V 1-POLE MAIN SERVICE PANEL
46	Panel	20 AMP 120V 1-POLE MAIN SERVICE PANEL	20 AMP 120V 1-POLE MAIN SERVICE PANEL
47	Panel	20 AMP 120V 1-POLE MAIN SERVICE PANEL	20 AMP 120V 1-POLE MAIN SERVICE PANEL
48	Panel	20 AMP 120V 1-POLE MAIN SERVICE PANEL	20 AMP 120V 1-POLE MAIN SERVICE PANEL
49	Panel	20 AMP 120V 1-POLE MAIN SERVICE PANEL	20 AMP 120V 1-POLE MAIN SERVICE PANEL
50	Panel	20 AMP 120V 1-POLE MAIN SERVICE PANEL	20 AMP 120V 1-POLE MAIN SERVICE PANEL

ELECTRICAL PLAN
 06A-1038



NUMBER	FLOOR	DESCRIPTION	REMARKS
1	1st	FRONT PORCH	CONCRETE ON COMPACTED SOIL
2	1st	FRONT PORCH	CONCRETE ON COMPACTED SOIL
3	1st	FRONT PORCH	CONCRETE ON COMPACTED SOIL
4	1st	FRONT PORCH	CONCRETE ON COMPACTED SOIL
5	1st	FRONT PORCH	CONCRETE ON COMPACTED SOIL
6	1st	FRONT PORCH	CONCRETE ON COMPACTED SOIL
7	1st	FRONT PORCH	CONCRETE ON COMPACTED SOIL
8	1st	FRONT PORCH	CONCRETE ON COMPACTED SOIL
9	1st	FRONT PORCH	CONCRETE ON COMPACTED SOIL
10	1st	FRONT PORCH	CONCRETE ON COMPACTED SOIL
11	1st	FRONT PORCH	CONCRETE ON COMPACTED SOIL
12	1st	FRONT PORCH	CONCRETE ON COMPACTED SOIL
13	1st	FRONT PORCH	CONCRETE ON COMPACTED SOIL
14	1st	FRONT PORCH	CONCRETE ON COMPACTED SOIL
15	1st	FRONT PORCH	CONCRETE ON COMPACTED SOIL
16	1st	FRONT PORCH	CONCRETE ON COMPACTED SOIL
17	1st	FRONT PORCH	CONCRETE ON COMPACTED SOIL
18	1st	FRONT PORCH	CONCRETE ON COMPACTED SOIL
19	1st	FRONT PORCH	CONCRETE ON COMPACTED SOIL
20	1st	FRONT PORCH	CONCRETE ON COMPACTED SOIL

FOOTING SCHEDULE

HOUSE WALLS	22" x 10" Min
DECKS & PORCHES	20" x 10" Min
BEARING WALL	22" x 10" Min
GARAGE WALL	20" x 10" Min

Min #4 Rebar Horizontal on undisturbed or compacted soil

VENTING SCHEDULE

Range Hoods	Vent Through Roof
All Bath Fans	Vent to Exterior
Dryer Vent	Vent to Exterior

ATRIC VENTILATION AREA: 300

PROVIDE 1" MIN AIR GAP AT EAVES WITH INSULATION. BAFFLES TYP. AT ALL TRUSS BAYS.

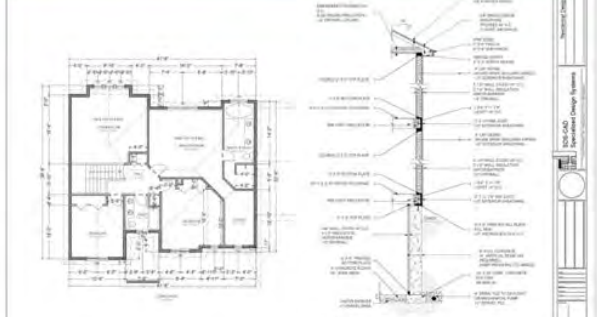
PROVIDE GABLE VENTS ALL GABLE ENDS.

PROVIDE GABLE ROOF VENTS ON BACKSIDE OF ROOFLINE ABOVE CONDITIONED AREA.

INSULATION SCHEDULE

Ceilings	R-38 Min
Wall above grade	R-19 Min
Wall interior below grade	R-13 Min

Residential Design
SDS-CAD Specialized Design Systems
11000 14th Street, Suite 100, Golden, CO 80401
303.440.0000
www.sds-cad.com



Custom Home Design

By SDS-CAD Specialized Design Systems
Plan #129

In the best of my knowledge these plans are shown to comply with local codes and building specifications and any changes made on these after printing are made with the owner's approval and at their expense. The contractor shall verify all dimensions and building conditions before beginning construction. While every effort has been made in the preparation of these plans to ensure accuracy, the contractor shall verify all dimensions and building conditions before beginning construction. While every effort has been made in the preparation of these plans to ensure accuracy, the contractor shall verify all dimensions and building conditions before beginning construction. While every effort has been made in the preparation of these plans to ensure accuracy, the contractor shall verify all dimensions and building conditions before beginning construction.

Page 1 Cover Page
Page 2 Main Floor Plan
Page 3 Basement Floor Plan
Page 4 Structural Framing Plan
Page 5 Electrical System Schedule
Page 6 Plumbing System Schedule
Page 7 Main Floor Details
Page 8 Basement Details
Page 9 Structural Framing Details
Page 10 Electrical System Details
Page 11 Plumbing System Details

OWNER: [Name]
ADDRESS: [Address]
CITY: [City]
STATE: [State]
ZIP: [Zip]
DATE: [Date]

ELECTRICAL SYSTEM CODE: NEC 2017
MECHANICAL SYSTEM CODE: IMC 2012
PLUMBING SYSTEM CODE: UPC 2012

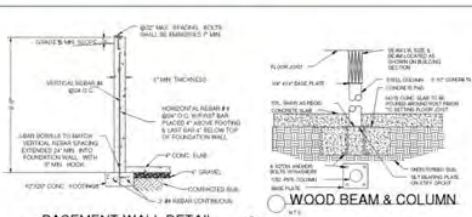
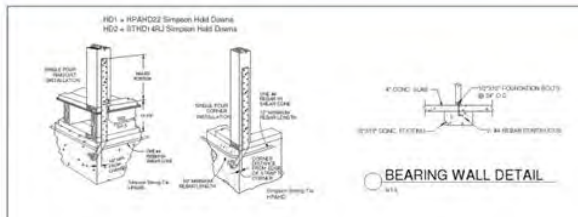


INSULATION SCHEDULE		FOOTING SCHEDULE		VENTING SCHEDULE	
Ceilings	R-38 Min	FOOTING WALLS	20" 4" Min	Range Hoods	Vent Through Roof
Walls Above Grade	R-16 Min	DECKS & PORCHES	18" 4" Min	All Bath Vents	Vent to Exterior
Walls Interior Below Grade	R-13 Min	BEARING WALL	20" 4" Min	Dryer Vent	Vent to Exterior
		DAMAGE WALL	18" 4" Min		

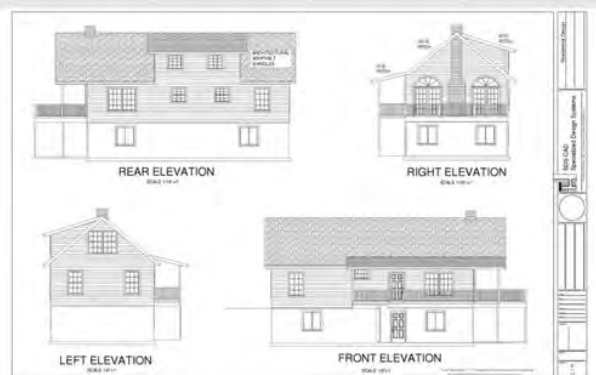
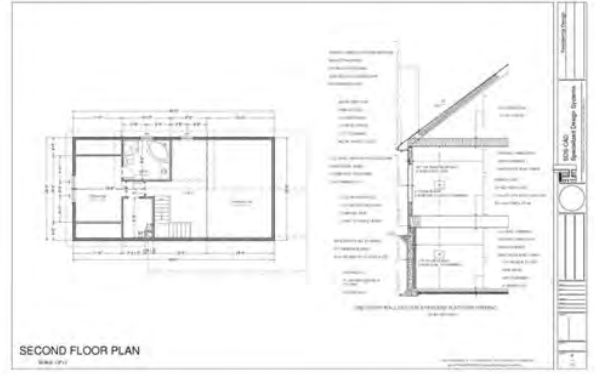
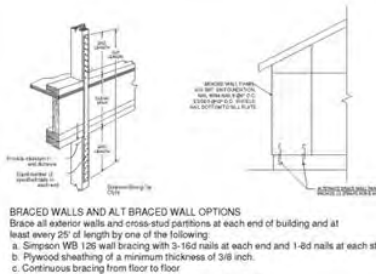
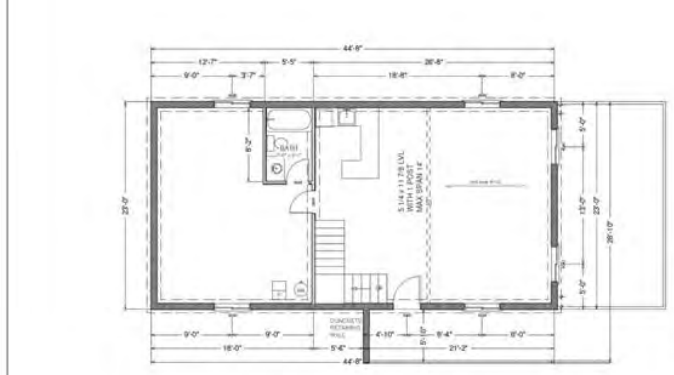
Min #2 #4 Rebar Horizontal on undisturbed or compacted soil

WINDOW SCHEDULE		DOOR SCHEDULE		
NUMBER	TYPE	FLOOR	DESCRIPTION	HEADER
WIN 1	1	1	48" x 72" W/SH	2X8
WIN 2	1	1	48" x 72" W/SH	2X8
WIN 3	1	1	48" x 72" W/SH	2X8
WIN 4	1	1	48" x 72" W/SH	2X8
WIN 5	1	1	48" x 72" W/SH	2X8
WIN 6	1	1	48" x 72" W/SH	2X8
WIN 7	1	1	48" x 72" W/SH	2X8
WIN 8	1	1	48" x 72" W/SH	2X8
WIN 9	1	1	48" x 72" W/SH	2X8
WIN 10	1	1	48" x 72" W/SH	2X8
WIN 11	1	1	48" x 72" W/SH	2X8
WIN 12	1	1	48" x 72" W/SH	2X8
WIN 13	1	1	48" x 72" W/SH	2X8
WIN 14	1	1	48" x 72" W/SH	2X8
WIN 15	1	1	48" x 72" W/SH	2X8
WIN 16	1	1	48" x 72" W/SH	2X8
WIN 17	1	1	48" x 72" W/SH	2X8
WIN 18	1	1	48" x 72" W/SH	2X8
WIN 19	1	1	48" x 72" W/SH	2X8
WIN 20	1	1	48" x 72" W/SH	2X8
WIN 21	1	1	48" x 72" W/SH	2X8
WIN 22	1	1	48" x 72" W/SH	2X8
WIN 23	1	1	48" x 72" W/SH	2X8
WIN 24	1	1	48" x 72" W/SH	2X8
WIN 25	1	1	48" x 72" W/SH	2X8
WIN 26	1	1	48" x 72" W/SH	2X8
WIN 27	1	1	48" x 72" W/SH	2X8
WIN 28	1	1	48" x 72" W/SH	2X8
WIN 29	1	1	48" x 72" W/SH	2X8
WIN 30	1	1	48" x 72" W/SH	2X8
WIN 31	1	1	48" x 72" W/SH	2X8
WIN 32	1	1	48" x 72" W/SH	2X8
WIN 33	1	1	48" x 72" W/SH	2X8
WIN 34	1	1	48" x 72" W/SH	2X8
WIN 35	1	1	48" x 72" W/SH	2X8
WIN 36	1	1	48" x 72" W/SH	2X8
WIN 37	1	1	48" x 72" W/SH	2X8
WIN 38	1	1	48" x 72" W/SH	2X8
WIN 39	1	1	48" x 72" W/SH	2X8
WIN 40	1	1	48" x 72" W/SH	2X8
WIN 41	1	1	48" x 72" W/SH	2X8
WIN 42	1	1	48" x 72" W/SH	2X8
WIN 43	1	1	48" x 72" W/SH	2X8
WIN 44	1	1	48" x 72" W/SH	2X8
WIN 45	1	1	48" x 72" W/SH	2X8
WIN 46	1	1	48" x 72" W/SH	2X8
WIN 47	1	1	48" x 72" W/SH	2X8
WIN 48	1	1	48" x 72" W/SH	2X8
WIN 49	1	1	48" x 72" W/SH	2X8
WIN 50	1	1	48" x 72" W/SH	2X8
WIN 51	1	1	48" x 72" W/SH	2X8
WIN 52	1	1	48" x 72" W/SH	2X8
WIN 53	1	1	48" x 72" W/SH	2X8
WIN 54	1	1	48" x 72" W/SH	2X8
WIN 55	1	1	48" x 72" W/SH	2X8
WIN 56	1	1	48" x 72" W/SH	2X8
WIN 57	1	1	48" x 72" W/SH	2X8
WIN 58	1	1	48" x 72" W/SH	2X8
WIN 59	1	1	48" x 72" W/SH	2X8
WIN 60	1	1	48" x 72" W/SH	2X8
WIN 61	1	1	48" x 72" W/SH	2X8
WIN 62	1	1	48" x 72" W/SH	2X8
WIN 63	1	1	48" x 72" W/SH	2X8
WIN 64	1	1	48" x 72" W/SH	2X8
WIN 65	1	1	48" x 72" W/SH	2X8
WIN 66	1	1	48" x 72" W/SH	2X8
WIN 67	1	1	48" x 72" W/SH	2X8
WIN 68	1	1	48" x 72" W/SH	2X8
WIN 69	1	1	48" x 72" W/SH	2X8
WIN 70	1	1	48" x 72" W/SH	2X8
WIN 71	1	1	48" x 72" W/SH	2X8
WIN 72	1	1	48" x 72" W/SH	2X8
WIN 73	1	1	48" x 72" W/SH	2X8
WIN 74	1	1	48" x 72" W/SH	2X8
WIN 75	1	1	48" x 72" W/SH	2X8
WIN 76	1	1	48" x 72" W/SH	2X8
WIN 77	1	1	48" x 72" W/SH	2X8
WIN 78	1	1	48" x 72" W/SH	2X8
WIN 79	1	1	48" x 72" W/SH	2X8
WIN 80	1	1	48" x 72" W/SH	2X8
WIN 81	1	1	48" x 72" W/SH	2X8
WIN 82	1	1	48" x 72" W/SH	2X8
WIN 83	1	1	48" x 72" W/SH	2X8
WIN 84	1	1	48" x 72" W/SH	2X8
WIN 85	1	1	48" x 72" W/SH	2X8
WIN 86	1	1	48" x 72" W/SH	2X8
WIN 87	1	1	48" x 72" W/SH	2X8
WIN 88	1	1	48" x 72" W/SH	2X8
WIN 89	1	1	48" x 72" W/SH	2X8
WIN 90	1	1	48" x 72" W/SH	2X8
WIN 91	1	1	48" x 72" W/SH	2X8
WIN 92	1	1	48" x 72" W/SH	2X8
WIN 93	1	1	48" x 72" W/SH	2X8
WIN 94	1	1	48" x 72" W/SH	2X8
WIN 95	1	1	48" x 72" W/SH	2X8
WIN 96	1	1	48" x 72" W/SH	2X8
WIN 97	1	1	48" x 72" W/SH	2X8
WIN 98	1	1	48" x 72" W/SH	2X8
WIN 99	1	1	48" x 72" W/SH	2X8
WIN 100	1	1	48" x 72" W/SH	2X8

MAIN FLOOR PLAN
SCALE 1/8"=1"



- Concrete**
1. All slabs are to be 4" concrete over 4" gravel unless otherwise noted on the plans.
 2. Concrete to be ACI 901-66, Type II cement, 2500 psi at 28 days, 5" maximum slump.
 3. Reinforcing to be ASTM A615-Bars with Fy=60 ksi temp.
 4. 30 diameter minimum at splices or weld per ACI 5.17.
 5. Concrete design based on Fc=2000 psi, Fc=2500 psi for quality only.
 6. Anchor bolts shall be A-307 embedded 7" minimum into concrete or masonry grout.

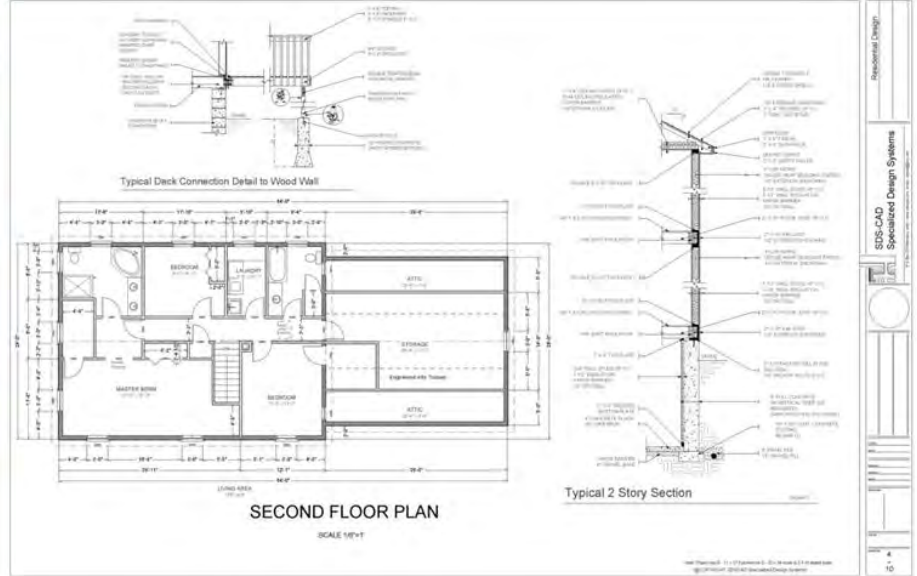


Residential Design

SCS-CAD Specialized Design Systems

©2018 SCS-CAD Specialized Design Systems

Plan #H140



Residential Design
SDS-CAD Specialized Design Systems
11/15/2016 10:00 AM
C:\Users\jdoyle\OneDrive\Documents\Plan #H140\Drawings\SDS-CAD Specialized Design Systems\Plan #H140.dwg
10



Family Room Fireplace Mantel Details



Family Room Post and Wall Detail

NUMBER	QTY	FLOOR	SIZE	DIMENSIONS	DESCRIPTION
DS1	1	1	2060	2448X130P	4-PANEL - COLOR 9, WHITE
DS2	1	1	2468	2688X130P	4-PANEL - COLOR 9, WHITE
DS3	8	1	2060	2288X130P	4-PANEL - COLOR 9, WHITE
DS4	2	1	2468	2288X130P	4-PANEL - COLOR 9, WHITE
DS5	2	1	2060	2288X134P	EXT 4-PANEL - COLOR 9, WHITE
DS6	1	1	2060	2288X130P	EXT 4-PANEL - COLOR 9, WHITE
DS7	2	1	1980	1088X6P	GARAGE 4-PANEL GARAGE DOOR
DS8	8	1	2060	2288X130P	4-PANEL - COLOR 9, WHITE
DS9	1	0	1024	2288X130P	4-PANEL - COLOR 9, WHITE
DS10	1	1	1980	2288X130P	EXT 4-PANEL - COLOR 9, WHITE
DS11	1	2	2060	2288X130P	4-PANEL - COLOR 9, WHITE
DS12	1	1	2060	2448X134P	EXT 4-PANEL - COLOR 9, WHITE
DS13	1	2	2060	2448X130P	4-PANEL - COLOR 9, WHITE
DS14	1	2	4080	2448X6P	BIFOLD 4-PANEL - COLOR 9, WHITE
DS15	1	2	2060	2688X130P	4-PANEL - COLOR 9, WHITE
DS16	1	2	1584	2688X6P	BIFOLD 4-PANEL - COLOR 9, WHITE

NUMBER	QTY	FLOOR	SIZE	DIMENSIONS	DESCRIPTION
WB1	1	1	5476	44X32	MULLED UNIT
WB2	1	1	30216	36X34P	SINGLE HUNG
WB3	1	1	1858	36X36P	SINGLE HUNG
WB4	2	2	3030	34X30P	SINGLE HUNG
WB5	2	0	4020	44X30P	LEFT HUNG
WB6	2	2	2930	24X30P	DOUBLE HUNG
WB7	8	2	3690	24X36P	SINGLE HUNG

FOOTING SCHEDULE	
HOUSE WALLS	50" x 9" Min
DECKS & PORCHES	18" x 9" Min
BEARING WALL	20" x 9" Min
GARAGE WALL	18" x 9" Min

Min 2 #4 Rebar Horizontal on undisturbed or compacted soil

VENTING SCHEDULE	
Range Hoods	Vent Through Roof
All Bath Fans	Vent to Exterior
Dryer Vent	Vent to Exterior

ATFC VENTILATION AREA REQ

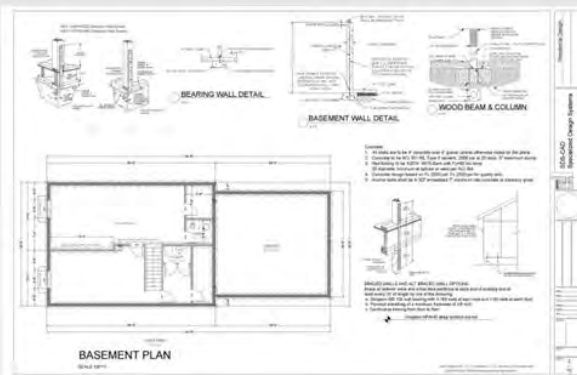
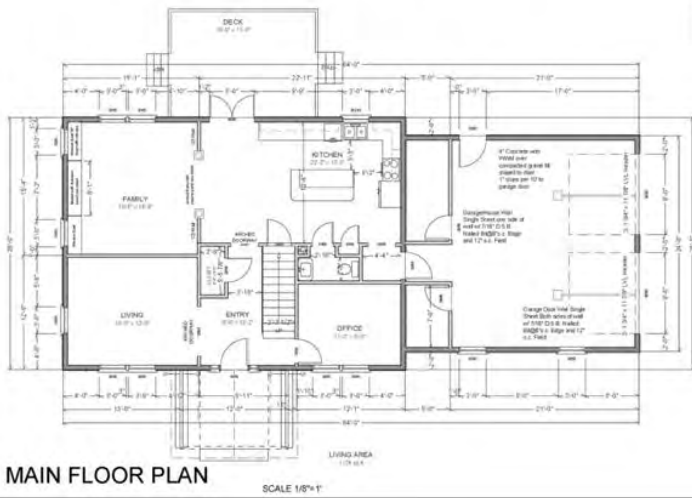
PROVIDE 1" MIN. AIR GAP AT EAVES WITH INSULATION

BATTLED TYP. AT ALL TRUSS BAYS

PROVIDE GARAGE VENTS ALL GARAGE FLOOR

PROVIDE GULLY ROOF VENTS ON EACH SIDE OF ROOFLINE ABOVE CONFINED AREA

INSULATION SCHEDULE	
Ceilings	R-58 Min
Walls above grade	R-19 Min
Walls interior below grade	R-13 Min



Residential Design
SDS-CAD Specialized Design Systems
11/15/2016 10:00 AM
C:\Users\jdoyle\OneDrive\Documents\Plan #H140\Drawings\SDS-CAD Specialized Design Systems\Plan #H140.dwg
10

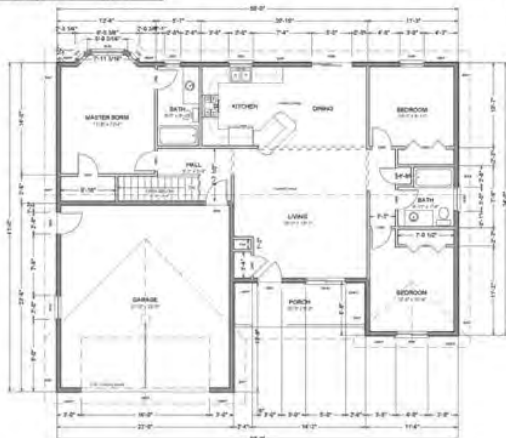
Residential Design
SDS-CAD Specialized Design Systems
11/15/2016 10:00 AM
C:\Users\jdoyle\OneDrive\Documents\Plan #H140\Drawings\SDS-CAD Specialized Design Systems\Plan #H140.dwg
10

VENTING SCHEDULE

Range Hoods	Vent Through Roof
All Bath Fans	Vent to Exterior
Dryer Vent	Vent to Exterior

INSULATION SCHEDULE

Ceilings	R-38 Min
Wall above grade	R-19 Min
Wall interior below grade	R-13 Min



MAIN FLOOR PLAN
SCALE 1/8"=1'

NUMBER	QTY	FLOOR	TYPE	DESCRIPTIONS	DESCRIPTION
D01	1	1	3048	3048X81 3/8"	3 PANEL DOOR COLOR WHITE WHITE
D02	2	0	3048	3048X81 3/8"	3 PANEL DOOR COLOR WHITE WHITE
F001	1	1	18075	18075X74	GARAGE 2 PANEL GARAGE DOOR
D04	1	1	2068	2068X81 3/8"	3 PANEL DOOR COLOR WHITE WHITE
D05	1	1	2068	20 7/8 WAXED 3/8"	3 PANEL DOOR COLOR WHITE WHITE
T001	3	1	2068	3048X81 3/8"	3 PANEL DOOR COLOR WHITE WHITE
D07	1	1	2068	3048X81 3/8"	3 PANEL DOOR COLOR WHITE WHITE
D08	2	1	2068	3048X81 3/4"	EXT 3 PANEL
D09	1	1	2068	3048X81 3/4"	EXT 3 PANEL
D10	2	1	1048	1048X81	BI-FOLD
D11	1	1	1048	1048X81	EXT BI-FOLD
D12	1	0	2448	36 1/8X80X1 3/8"	3 PANEL DOOR COLOR WHITE WHITE

NUMBER	QTY	FLOOR	TYPE	DESCRIPTIONS	DESCRIPTION
H01	2	1	1730	147X30"	DOUBLE HUNG
H02	1	1	2550	247X48"	DOUBLE HUNG
H03	1	1	3040	367X48"	DOUBLE HUNG
H04	2	1	3030	367X36"	DOUBLE HUNG
H05	1	1	4030	487X36"	DOUBLE HUNG
H06	1	1	4640	487X48"	RIGHT SLIDING
H07	1	1	5040	607X48"	RIGHT SLIDING
H08	1	1	3260	367X36"	DOUBLE HUNG
H09	2	0	1260	147X30"	DOUBLE HUNG
H10	2	0	2020	247X36"	DOUBLE HUNG
H11	1	0	6030	607X42"	RIGHT SLIDING

Residential Design
SDS-CAD Specialized Design Systems
12

**Custom Home Design
Plan #153
By SDS-CAD Specialized Design Systems**

To the best of my knowledge these plans are drawn to comply with owner's and/or builder's specifications and any changes made on them after prints are made will be done at the owner's and/or builder's expense and responsibility. The contractor shall verify all dimensions and conditions drawing. SDS-CAD is not liable for errors unless construction has begun. While every effort has been made in the preparation of this plan to avoid mistakes, the maker can not guarantee against human error. The contractor of the job must check all dimensions and other details prior to construction and be solely responsible therefor. All calculations and member sizing should be verified for your building by a certified building official.

**BUILDING CONTRACTOR/HOME OWNER
TO REVIEW AND VERIFY ALL DIMENSIONS,
SPECS, AND CONNECTIONS BEFORE
CONSTRUCTION BEGINS.**

**ELECTRICAL SYSTEM CODE: SEC 2071
MECHANICAL SYSTEM CODE: SEC 2803
PLUMBING SYSTEM CODE: SEC 2901**

Page 1 Cover Page
Page 2 Main Floor Plan
Page 3 Basement Plan
Page 4 Elevations Plan
Page 5 Typical Section Details
Page 6 Floor and Roof Framing Plan
Page 7 House House Section
Page 8 Column & Slab Details
Page 9 Main Electrical
Page 10 Basement Electrical
Page 11 Main Details
Page 12 Beam & Joist Calculations

FOOTING SCHEDULE

ROOF WALLS	20" x 40" Min
DECKS & PORCHES	18" x 10" Min
BEARING WALL	20" x 10" Min
GARAGE WALL	18" x 10" Min

Min 2 #4 Rebar Horizontal on undisturbed or compacted soil

CONCRETE WALL CANTILEVER DETAIL

BASEMENT PLAN
SCALE 1/8"=1'



LEFT ELEVATION
SCALE 1/8"=1'



REAR ELEVATION
SCALE 1/8"=1'



RIGHT ELEVATION
SCALE 1/8"=1'



FRONT ELEVATION
SCALE 1/8"=1'



PERSPECTIVE VIEWS

Residential Design
SDS-CAD Specialized Design Systems
4





Custom Home Design
Plan #155
By SDS-CAD Specialized Design Systems

BUILDING CONTRACTOR/HOME OWNER
TO REVIEW AND VERIFY ALL DIMENSIONS,
SIZES, AND CONNECTIONS BEFORE
CONSTRUCTION BEGINS.
ELECTRICAL SYSTEM CODE: SEC.2701
MECHANICAL SYSTEM CODE: SEC.2801
PLUMBING SYSTEM CODE: SEC.2901

- Page 1 Cover Page
- Page 2 Main Floor Plan
- Page 3 Basement Plan
- Page 4 Elevation Plan
- Page 5 Typical Section Details
- Page 6 Floor and Roof Framing Plan
- Page 7 Whole House Section
- Page 8 Cabinet & Sled Details
- Page 9 Main Electrical
- Page 10 Basement Electrical
- Page 11 Misc Details
- Page 12 Calculations

To the best of my knowledge these plans are drawn to comply with owner's and/or builder's specifications and any changes made on these after prints are made will be those of the owner's and/or builder's expense and responsibility. The contractor shall verify all dimensions and structural drawing. SDS-CAD is not liable for errors once construction has begun. Write any effort has been made in the preparation of these plans to avoid mistakes, the reader can not guarantee against human error. The contractor of the job must check all dimensions and other details prior to construction and be solely responsible therefor. All calculations and member sizing should be verified for your building by a qualified building official.

1. All slab ties to be 4" concrete over 4" gravel unless otherwise noted on the plans.
2. Concrete to be AC 251146, Type I normal, 2500 psi at 28 days, 17 maximum slump.
3. Reinforcing to be ASTM A615 Bars with 7 yield to temp 30 diameter maximum at surface or 20 dia for AC 301.
4. Concrete design based on Fc 2000 psi, Ft 2500 psi for quality only.
5. Anchor bolts shall be A 307 embedded 7" minimum into concrete or masonry grade.

FOOTING SCHEDULE

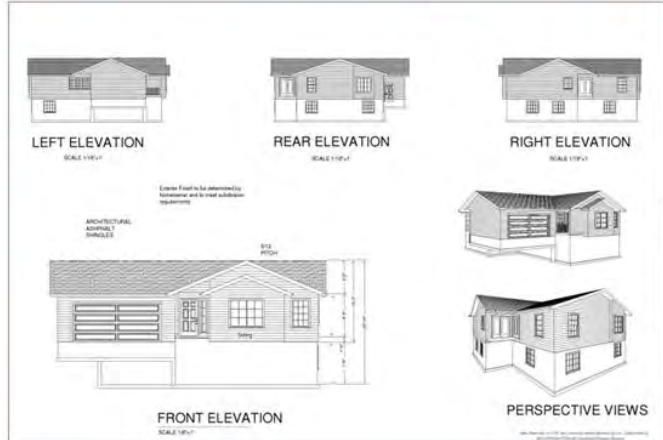
HOUSE WALLS	20" x 10" Min
DECK & PORCHES	18" x 10" Min
SLABING WALL	20" x 10" Min
GARAGE WALL	18" x 10" Min

Min 2 #4 Rebar horizontal on undisturbed or compacted soil

- BRICK WALLS BWP AND ALL FINISHED WALLS KEEP OPTIONS**
Base of concrete wall and concrete foundation at each end of slab and at
intervals per length of wall of the following: 10' and 15' for exterior walls
and 10' for walls at each end
5. Reinforced concrete to a minimum thickness of 8" min.
6. Continuous footing from floor to floor



BASEMENT PLAN
SCALE 1/8"=1'-0"



FRONT ELEVATION
SCALE 1/8"=1'-0"

PERSPECTIVE VIEWS

VENTING SCHEDULE

Range Hoods	Vent Through Roof
All Bath Fans	Vent to Exterior
Dryer Vent	Vent to Exterior

INSULATION SCHEDULE

Ceilings	R-38 Min
Wall above grade	R-19 Min
Wall interior below grade	R-13 Min

DOOR SCHEDULE				
NUMBER	QTY	FLOOR	SIZE	DESCRIPTION
DO1	1	1	1800x78	GARAGE 2 PANEL GARAGE DOOR
DO2	1	1	3600x78	BIFOLD
DO3	1	1	3600x78	26 1/4 INCHES 3 1/2 PANEL DOOR - COLOR: WHITE WHITE
DO4	1	1	3600x78	26 1/4 INCHES 3 1/2 PANEL DOOR - COLOR: WHITE WHITE
DO5	1	1	3600x54	POCKET 3 PANEL DOOR - COLOR: WHITE WHITE
DO6	1	1	3600x54	EXT. 3 PANEL
DO7	1	1	3100x66	BIFOLD
DO8	1	1	4000x2000	BIFOLD
DO9	1	1	3600x80	EXT. SLIDER GLASS
DO10	1	1	3600x80	EXT. SLIDER GLASS
DO11	1	1	3600x54	3 PANEL DOOR - COLOR: WHITE WHITE

WINDOW SCHEDULE				
NUMBER	QTY	FLOOR	SIZE	DESCRIPTION
W01	1	1	1200x72	FIXED GLASS
W02	1	1	2400x2874	SINGLE HUNG
W03	1	1	3000x2874	SINGLE HUNG
W04	1	1	3000x2874	SINGLE HUNG
W05	1	1	6000x6750	RIGHT SLIDING



MAIN FLOOR PLAN
SCALE 1/8"=1'-0"

Notes: Pages 10-11 & 12 - copy made from shared project 021121 - 2124 issues 01
© 2021 SDS-CAD Specialized Design Systems



Custom Home Design #H156 Cabin Plans By SDS-CAD Specialized Design Systems

To the best of my knowledge these plans are to be used to comply with owner's and/or builder's specifications and any changes made on them, after errors are made will be done at the owner's and/or builder's expense and responsibility. The contractor shall verify all dimensions and enclosed drawing. SDS-CAD is not liable for errors once construction has begun. While every effort has been made in the preparation of this plan to avoid mistakes, the reader will guarantee against human error. The contractor of the job must check all dimensions and other details prior to construction and be solely responsible thereafter. All dimensions and member sizes should be verified for your building by a certified building official.

Page 1 Cover Page
Page 2 Main & Second Floor Plan
Page 3 Foundation Plan
Page 4 Elevation Plan
Page 5 Typical Section Details
Page 6 Floor and Roof Framing Plan
Page 7 Whole House Section
Page 8 Cabinet & Slat Details
Page 9 Main Floor Electrical
Page 10 Second Floor Electrical
Page 11 Misc Details
Page 12 Calculations

BUILDING CONTRACTOR/HOME OWNER TO REVIEW AND VERIFY ALL DIMENSIONS, SPECS, AND CONNECTIONS BEFORE CONSTRUCTION BEGINS. BUILD PER IRC 2003 REQUIREMENTS ELECTRICAL SYSTEM CODE: SEC 2701 MECHANICAL SYSTEM CODE: SEC 3801 PLUMBING SYSTEM CODE: SEC 3901

FRONT ELEVATION SCALE 1/8"=1'
REAR ELEVATION SCALE 1/8"=1'
LEFT ELEVATION SCALE 1/8"=1'

PICTORIAL VIEWS

WINDOW SCHEDULE							
NUMBER	QTY	FLOOR	SIZE	DIMENSIONS	WIDTH	HEIGHT	DESCRIPTION
W01	8	0	3060	36"X24"	24"	36"	SINGLE HUNG
W02	8	1	3060	36"X24"	36"	65"	SINGLE HUNG
W03	2	0	3060	36"X24"	36"	36"	FIXED GLASS
W04	2	1	3060	36"X24"	36"	65"	FIXED GLASS
W05	1	0	3060	36"X24"	36"	65"	SINGLE HUNG
W06	2	1	3060	36"X24"	48"	65"	RIGHT SLIDING

DOOR SCHEDULE			
NUMBER	QTY	FLOOR	DESCRIPTION
D01	1	0	3060 6 PANEL GARAGE DOOR
D02	2	1	3068 3 PANEL DOOR - COLOR WHITE WHITE
D04	1	1	3068 3 PANEL DOOR - COLOR WHITE WHITE
D05	2	1	3068 EXT 3-PANEL
D06	1	1	4068 6 PANEL
D07	1	1	4068 EXT WINGED-GLASS
D08	1	2	3068 EXT 3-PANEL
D09	1	0	3068 3 PANEL DOOR - COLOR WHITE WHITE
D10	1	0	3068 EXT 3-PANEL DOOR - COLOR WHITE WHITE
D11	2	0	3068 3 PANEL DOOR - COLOR WHITE WHITE
D12	1	2	3068 3-PANEL DOOR - COLOR WHITE WHITE
D13	1	2	3068 3-PANEL DOOR - COLOR WHITE WHITE

MAIN FLOOR PLAN
SCALE 1/8"=1'

SECOND FLOOR PLAN
SCALE 1/8"=1'

Residential Design
 SDS-CAD Specialized Design Systems
 12

Basement Plan
SCALE 1/8"=1'

Basement Plan
SCALE 1/8"=1'



RIGHT ELEVATION
SCALE 1/16"=1'



REAR ELEVATION
SCALE 1/16"=1'



LEFT ELEVATION
SCALE 1/16"=1'

Exterior Finish to be determined by homeowner and to meet subdivision requirements

ARCHITECTURAL
ASPHALT
SHINGLES



FRONT ELEVATION
SCALE 1/8"=1'



PERSPECTIVE VIEWS

© 2019 SDS-CAD, Inc. All rights reserved. 10/20/19

VENTING SCHEDULE

Range Hoods	Vent Through Roof
All Bath Fans	Vent to Exterior
Dryer Vent	Vent to Exterior

INSULATION SCHEDULE

Ceilings	R-38 Min
Wall above grade	R-19 Min
Wall interior below grade	R-13 Min



MAIN FLOOR PLAN
SCALE 1/8"=1'

© 2019 SDS-CAD, Inc. All rights reserved. 10/20/19

Residential Design
SDS-CAD
Specialized Design Systems



Custom Home Design
Plan #209
By SDS-CAD Specialized Design Systems

BUILDING CONTRACTOR/HOME OWNER
TO REVIEW AND VERIFY ALL DIMENSIONS,
SPACES, AND CONNECTIONS BEFORE
CONSTRUCTION BEGINS. GAINING TO BE
BUILT AS PER IRC 2006 OR CURRENT LOCAL CODE.

Page 1	Cover Page
Page 2	Main Floor Plan
Page 3	Basement Plan
Page 4	Elevation Plans
Page 5	Typical Section Details
Page 6	Floor and Roof Framing Plan
Page 7	Whole House Section
Page 8	Foundation & Slab Details
Page 9	Main Electrical
Page 10	Basement Electrical
Page 11	Main Details

To the best of my knowledge these plans are drawn to comply with state or local or builder's specifications and any changes made on them after plans are made are for the owner's use and/or builder's superior and responsibility. The contractor shall verify all dimensions and enclosed details. SDS-CAD is not liable for errors or omissions in construction that begin. While every effort has been made in the preparation of the plan to avoid mistakes, the owner must not give them up without review. The contractor of the job must check all dimensions and other details prior to construction and be solely responsible therefor. All construction and material being should be verified for your building by a certified building official.

- Notes:
- All stone size to be #1 concrete over #1 gravel areas otherwise noted on the plans.
 - Concrete to be AC 2500 psi, 4" min. 2000 psi at 28 days, 4" maximum slump.
 - Reinforcing to be ASTM A635 Bars with E-6010 hot dip Zn. diameter minimum as shown or as per ACI 308.
 - Concrete design based on F_c 2800 psi, F_t 2500 psi for quality only.
 - Anchor bolts shall be A307, embedded 7" minimum into concrete or masonry good.

BRICKED WALLS, BERRY AND ALL BRICKED WALLS ARE OPENING
Face of exterior wall and interior partition at each end of building and at
each end of all walls in case of the following:
1. Exterior walls of all exterior walls.
2. Exterior walls of all exterior walls.
3. Concrete footing from top to base.

FOOTING SCHEDULE

HOUSE WALLS	30" x 10" Min.
DECKS & PORCHES	14" x 10" Min.
CEILING WALL	20" x 10" Min.
GAUGE WALL	18" x 10" Min.

Min 2 #4 Rebar Horizontal
on undisturbed or compacted soil

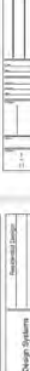


BASEMENT PLAN
SCALE 3/16"=1'

Residential Design
SDS-CAD
Specialized Design Systems



Residential Design
SDS-CAD
Specialized Design Systems



Residential Design
SDS-CAD
Specialized Design Systems





Custom Home Design
Plan #211
By SDS-CAD Specialized Design Systems

BUILDING CONTRACTOR/HOME OWNER TO REVIEW AND VERIFY ALL DIMENSIONS, SPECS, AND CONNECTIONS BEFORE CONSTRUCTION BEGINS.
BUILD AS PER UBC, IRC OR CURRENT LOCAL CODE REQUIREMENTS.

Page 1	Cover Page
Page 2	Main Floor Plan
Page 3	Foundation Plan
Page 4	Elevation Plan
Page 5	Typical Section Details
Page 6	Floor and Roof Framing Plan
Page 7	Cabinet & Main Electrical
Page 8	Misc Details

To the best of my knowledge these plans are drawn to comply with owner's and/or builder's specifications and any changes made on them after prints are made will be done at the owner's and/or builder's expense and responsibility. The contractor shall verify all dimensions and enclosed drawing. SDS-CAD is not liable for errors once construction has begun. While every effort has been made in the preparation of this plan to avoid mistakes, the maker can not guarantee against human error. The contractor of the job must check all dimensions and other details prior to construction and be solely responsible thereafter. All calculations and member sizing should be verified for your building by a certified building official.

VENTING SCHEDULE

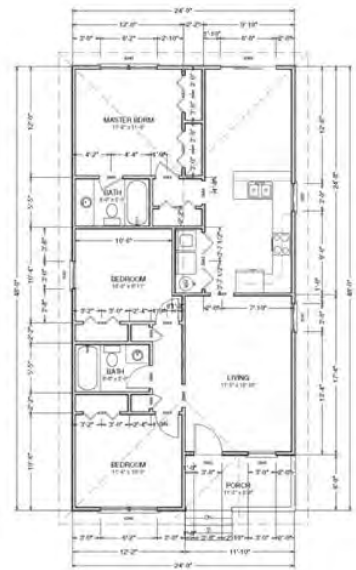
Range Hoods	Vent Through Roof
All Bath Fans	Vent to Exterior
Dryer Vent	Vent to Exterior

INSULATION SCHEDULE

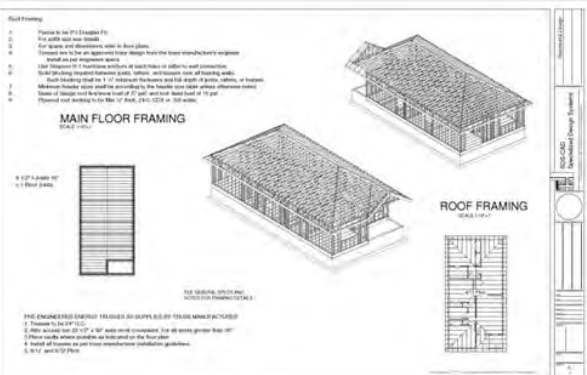
Ceilings	R-38 Min
Wall above grade	R-19 Min
Wall interior below grade	R-13 Min

WINDOW SCHEDULE						
NUMBER	QTY	FLOOR	SIZE	FINISHINGS	WIDTH	HEIGHT
W01	1	1	36"00	36"00	36"	36"
W02	3	1	36"00	36"00	36"	48"
W03	7	1	24"00	24"00	24"	48"

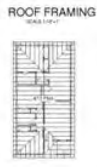
DOOR SCHEDULE						
NUMBER	QTY	FLOOR	SIZE	FINISHINGS	WIDTH	HEIGHT
D01	1	1	36"00	36"00	36"	80"
D02	1	1	36"00	36"00	36"	80"
D03	1	1	36"00	36"00	36"	80"
D04	1	1	36"00	36"00	36"	80"
D05	1	1	36"00	36"00	36"	80"
D06	1	1	36"00	36"00	36"	80"



MAIN FLOOR PLAN
SCALE 1/8"=1'



- Roof Framing
1. Frame to be (1) Double Ply
 2. Use solid wood joists
 3. For spans and dimensions refer to Beam table
 4. Frame area to be approved design from the engineering authority
 5. Use Simpson's 5/8" diameter anchors in each rafter to allow for wind connections
 6. All rafters to be spaced 24" on center, and spaced over all framing walls.
 7. Each rafter to be 1" 1/2" minimum at the eaves and 1 1/2" depth in gable, valley, or trapezoid
 8. Minimum header size shall be according to the header and table above unless otherwise noted
 9. All rafters to be spaced 24" on center and shall be cut at 90 degrees
 10. Header and anchors to be 1/2" dia. and shall be cut at 90 degrees



- THE ENGINEER/ARCHITECT PROVIDES AN APPROXIMATE FRAMING MEMBER SCHEDULE
1. Trusses to be 2x12
2. Rafters to be 2x12
3. All rafters to be 2x12
4. Header to be 2x12
5. All other framing to be 2x12 unless otherwise noted

VENTING SCHEDULE

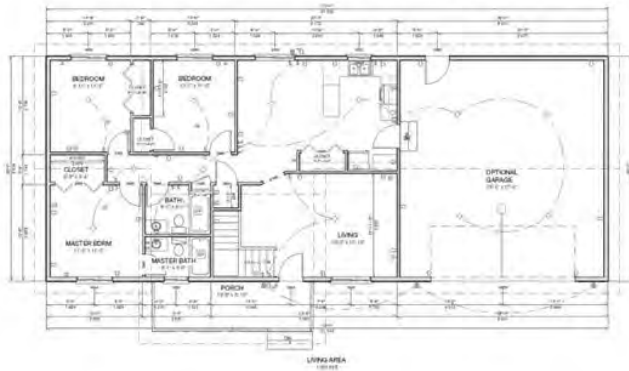
Range Hoods	Vent Through Roof
All Bath Fans	Vent to Exterior
Dryer Vent	Vent to Exterior

INSULATION SCHEDULE

Ceilings	R-38 Min
Wall above grade	R-19 Min
Wall interior below grade	R-13 Min

NUMBER	LOFT	FLOOR	THICK	DESCRIPTION
001	1	1	2000	12" EPS
002	1	1	1400	2" X 4" RAFTER PANEL, WOODGRAN CHEMICAL RESISTANT
003	1	1	1400	2" X 4" RAFTER PANEL, WOODGRAN CHEMICAL RESISTANT
004	1	1	1400	2" X 4" RAFTER PANEL, WOODGRAN CHEMICAL RESISTANT
005	1	1	1400	2" X 4" RAFTER PANEL, WOODGRAN CHEMICAL RESISTANT
006	1	1	1400	2" X 4" RAFTER PANEL, WOODGRAN CHEMICAL RESISTANT
007	1	1	1400	2" X 4" RAFTER PANEL, WOODGRAN CHEMICAL RESISTANT
008	1	1	1400	2" X 4" RAFTER PANEL, WOODGRAN CHEMICAL RESISTANT
009	1	1	1400	2" X 4" RAFTER PANEL, WOODGRAN CHEMICAL RESISTANT
010	1	1	1400	2" X 4" RAFTER PANEL, WOODGRAN CHEMICAL RESISTANT
011	1	1	1400	2" X 4" RAFTER PANEL, WOODGRAN CHEMICAL RESISTANT
012	1	1	1400	2" X 4" RAFTER PANEL, WOODGRAN CHEMICAL RESISTANT
013	1	1	1400	2" X 4" RAFTER PANEL, WOODGRAN CHEMICAL RESISTANT
014	1	1	1400	2" X 4" RAFTER PANEL, WOODGRAN CHEMICAL RESISTANT
015	1	1	1400	2" X 4" RAFTER PANEL, WOODGRAN CHEMICAL RESISTANT
016	1	1	1400	2" X 4" RAFTER PANEL, WOODGRAN CHEMICAL RESISTANT
017	1	1	1400	2" X 4" RAFTER PANEL, WOODGRAN CHEMICAL RESISTANT
018	1	1	1400	2" X 4" RAFTER PANEL, WOODGRAN CHEMICAL RESISTANT
019	1	1	1400	2" X 4" RAFTER PANEL, WOODGRAN CHEMICAL RESISTANT
020	1	1	1400	2" X 4" RAFTER PANEL, WOODGRAN CHEMICAL RESISTANT

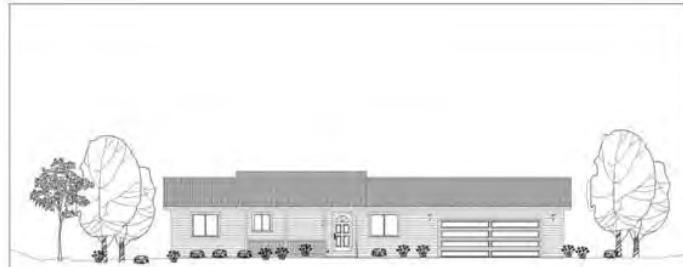
NUMBER	LOFT	FLOOR	THICK	DESCRIPTION
001	1	1	4000	4" EPS
002	1	1	4000	4" EPS
003	1	1	4000	4" EPS
004	1	1	4000	4" EPS
005	1	1	4000	4" EPS
006	1	1	4000	4" EPS
007	1	1	4000	4" EPS
008	1	1	4000	4" EPS
009	1	1	4000	4" EPS
010	1	1	4000	4" EPS
011	1	1	4000	4" EPS
012	1	1	4000	4" EPS
013	1	1	4000	4" EPS
014	1	1	4000	4" EPS
015	1	1	4000	4" EPS
016	1	1	4000	4" EPS
017	1	1	4000	4" EPS
018	1	1	4000	4" EPS
019	1	1	4000	4" EPS
020	1	1	4000	4" EPS



MAIN FLOOR PLAN
SCALE 1/8"=1'

Architectural Authority (AAA) - 11/17/18, with 30-day stamped permit valid in CA. (1/1/2020-12/31/2020)
© 2018 SDS-CAD Specialized Design Systems

Residential Design
SDS-CAD Specialized Design Systems
11



Custom Home Design
#H214 1180 sq ft Spec
By SDS-CAD Specialized Design Systems

To the best of my knowledge these plans are drawn to comply with owner's need or builder's specifications and any changes made on their after plans are made will be done at the owner's and/or builder's expense and responsibility. The contractor shall verify all dimensions and enclosed drawings. SDS-CAD is not liable for errors in construction that result from any errors that have been made in the preparation of the plan to avoid mistakes, the maker does not guarantee against human error. The contractor of the job must check all dimensions and other details prior to construction and be solely responsible therefor. All substitutions and material being checked for approval for your liability by a verified building official.

BUILDING CONTRACTOR/HOME OWNER TO REVIEW AND VERIFY ALL DIMENSIONS, SPECS, AND CONNECTIONS BEFORE CONSTRUCTION BEGINS.
ELECTRICAL SYSTEM CODE: SEC 2701
MECHANICAL SYSTEM CODE: SEC 2801
PLUMBING SYSTEM CODE: SEC 2901

- Page 1 Cover Page
- Page 2 Main Floor Plan
- Page 3 Basement Plan
- Page 4 Elevation Plan
- Page 5 Typical Section Details
- Page 6 Floor and Roof Framing Plan
- Page 7 Whole House Section
- Page 8 Column & Wall Details
- Page 9 Main Electrical
- Page 10 Basement Electrical
- Page 11 Misc Details

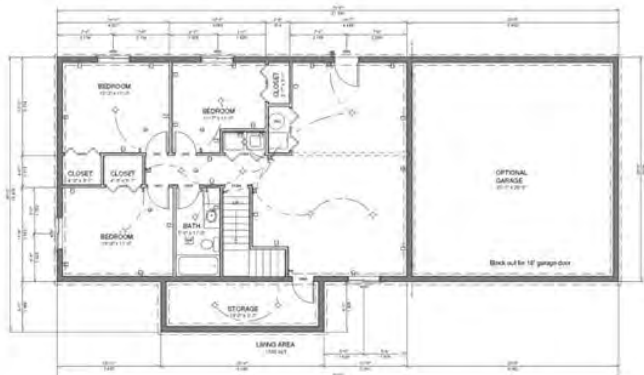
Residential Design
SDS-CAD Specialized Design Systems
11

BRACED WALLS AND ALT BRACED WALL OPTIONS
Brace all exterior walls and cross stud partitions at each end of building and at least every 20' of length by one of the following:
a. Simpson WS 126 wall bracing with 3-1/2" x 1/4" nails at each end and 1-5/8" nails at each stud.
b. Plywood sheathing of a minimum thickness of 3/8 inch.
c. Continuous bracing from floor to floor.
Simpson HPA4HD strap location marker

FOOTING SCHEDULE

HOUSE WALLS	20" x 10" Min
DECKS & PORCHES	18" x 10" Min
BEARING WALL	20" x 10" Min
GARAGE WALL	18" x 10" Min

Min 2 #4 Rebar Horizontal on undisturbed or compacted soil



BASEMENT PLAN
SCALE 1/8"=1'

- Concrete
- All slabs are to be 4" concrete over 4" gravel unless otherwise noted on the plans.
 - Concrete to be ACI 301.46, Type 3 cement, 2500 psi at 28 days, 5" maximum slump.
 - Reinforcing to be ASTM A615 Bars with Fwy60 hot temp 30 diameter minimum at splices or weld per ACI 308.
 - Concrete design based on: Fc 2500 psi, Ft 2500 psi for quality only.
 - Anchor bolts shall be A-307 embedded 7" minimum into concrete or masonry pour.



Architectural Authority (AAA) - 11/17/18, with 30-day stamped permit valid in CA. (1/1/2020-12/31/2020)
© 2018 SDS-CAD Specialized Design Systems

Residential Design
SDS-CAD Specialized Design Systems
11



Residential Design
SDS-CAD Specialized Design Systems
11



**Custom Cabin Design
Plan #216 Aspen Cabin
By SDS-CAD Specialized Design Systems**

To the best of my knowledge these plans are drawn to comply with owner's and/or builder's specifications and any changes made on them after prints are made will be done at the owner's and / or builder's expense and responsibility. The contractor shall verify all dimensions and enclosed drawing. SDS-CAD is not liable for errors once construction has begun. While every effort has been made in the preparation of this plan to avoid mistakes, the maker can not guarantee against human error. The contractor of the job must check all dimensions and other details prior to construction and be solely responsible therefor. All calculations and member sizing should be verified for your building by a certified building official.

Page 1 Cover Page
Page 2 Main Floor Plan
Page 3 Post and Foundation Plan
Page 4 Second Floor Plan
Page 5 Elevation Plan
Page 6 Floor and Roof Framing Plan
Page 7 Whole House Framing Section
Page 8 Main & Second Floor Electrical

BUILDING CONTRACTOR/HOME OWNER TO REVIEW AND VERIFY ALL DIMENSIONS, SPECS, AND CONNECTIONS BEFORE CONSTRUCTION BEGINS. HOME TO BE BUILT AS PER IBC, UBC OR CURRENT CODE

Residential Design
SDS-CAD
Specialized Design Systems



MAIN FLOOR PLAN
SCALE 1/4"=1'

VENTING SCHEDULE

Range Hoods	Vent Through Roof
All Bath Fans	Vent to Exterior
Dryer Vent	Vent to Exterior

ATIC VENTILATION AREA: 1000

PROVIDE 1" MIN AIR GAP AT EAVES WITH INSULATION GAFFLES TOP AT ALL TRUSS BAYS.

PROVIDE GABLE VENTS ALL GABLE ENDS.

PROVIDE GABLE ROOF VENTS OR BARRICADES OR ROOF LINE ABOVE CONDITIONED AREA.

FOOTING SCHEDULE

HOUSE WALLS	20" x 9" Min
DECKS & PORCHES	18" x 8" Min
BEARING WALL	20" x 9" Min
GARAGE WALL	18" x 9" Min

Min 2 #4 Rebar Horizontal on undisturbed or compacted soil

INSULATION SCHEDULE

Ceilings	R-38 Min
Wall above grade	R-19 Min
Wall interior below grade	R-13 Min

DOOR SCHEDULE

NUMBER	QTY	FLOOR	SIZE	DESCRIPTION
D01	1	1	2368	HINGED
D02	1	1	2668	18" COLD LOCKER PANEL
D03	1	1	3068	EXT SUNRISE PANEL
D04	1	1	2668	HINGED
D05	1	1	2368	HINGED

WINDOW SCHEDULE

NUMBER	QTY	FLOOR	SIZE	DESCRIPTION
W01	1	1	3350	DOUBLE HUNG
W02	5	1	3050	DOUBLE HUNG
W03	1	2	3054	DOUBLE HUNG
W04	1	2	3346	DOUBLE HUNG

Residential Design
SDS-CAD
Specialized Design Systems

EAR ELEVATION **RIGHT ELEVATION**

FRONT ELEVATION **LEFT ELEVATION**

SECOND FLOOR PLAN

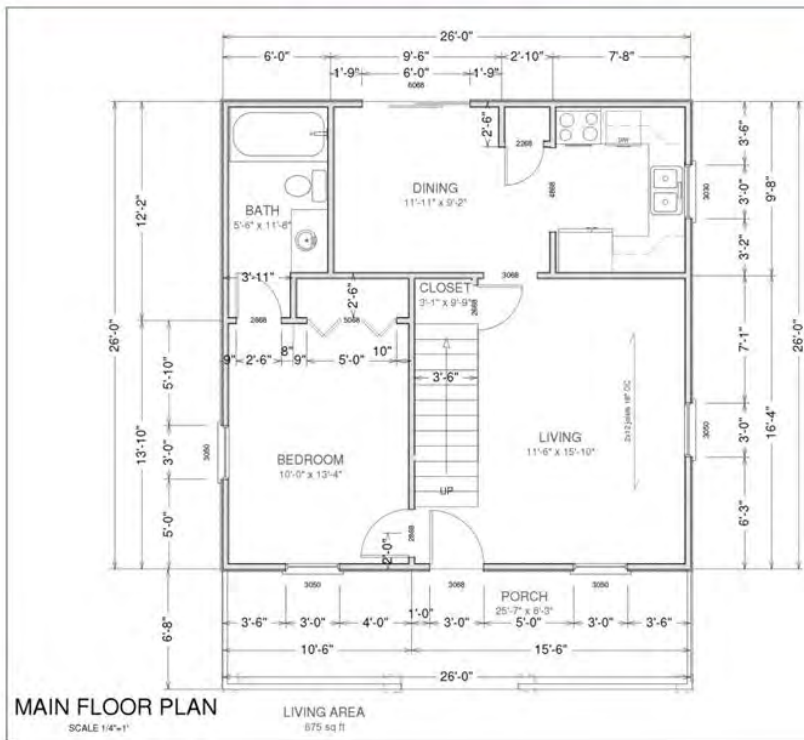
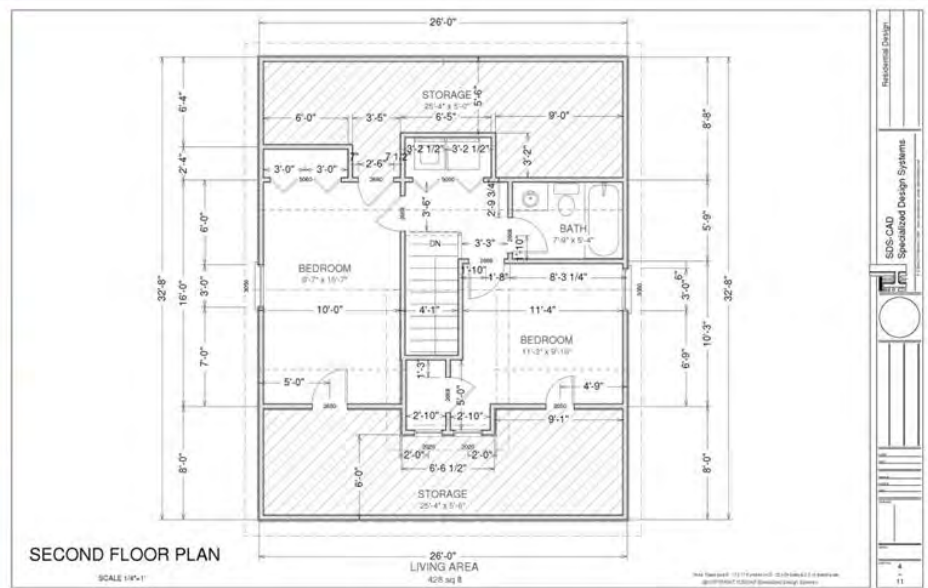
DOOR SCHEDULE

NUMBER	QTY	FLOOR	DESCRIPTION	
D01	1	2	2368	DOOR
D02	1	2	2668	DOOR
D03	1	2	3068	DOOR
D04	1	2	2668	DOOR
D05	1	2	2368	DOOR

WINDOW SCHEDULE

NUMBER	QTY	FLOOR	DESCRIPTION	
W01	1	2	3350	WINDOW
W02	5	2	3050	WINDOW
W03	1	2	3054	WINDOW
W04	1	2	3346	WINDOW

Residential Design
SDS-CAD
Specialized Design Systems



VENTING SCHEDULE

Range Hoods	Vent Through Roof
All Bath Fans	Vent to Exterior
Dryer Vent	Vent to Exterior

AIRC VENTILATION
AREA = 200

PROVIDE 1" MIN AIR GAP AT EAVES WITH INSULATION Baffles/TYP. AT ALL TRUSS BAYS.

PROVIDE GABLE VENTS ALL GABLE ENDS.

PROVIDE GABLE SOOF VENTS ON BACKSIDE OF ROOF LINE ABOVE CONDENSED AREA.

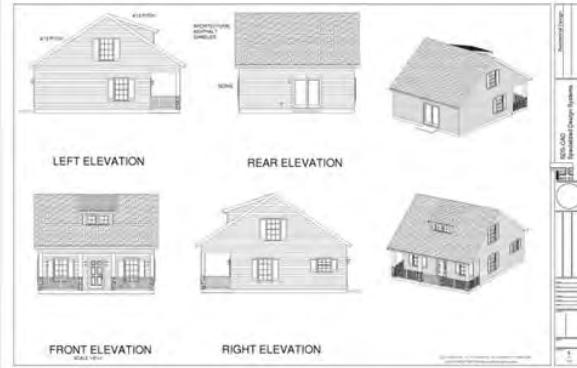
FOOTING SCHEDULE

HOUSE WALLS	20" x 9" Min
DECKS & PORCHES	18" x 9" Min
BEARING WALL	25" x 9" Min
GARAGE WALL	18" x 9" Min

Min 2 #4 Rebar Horizontal on undisturbed or compacted soil

INSULATION SCHEDULE

Ceilings	R-35 Min
Wall above grade	R-19 Min
Wall interior below grade	R-15 Min

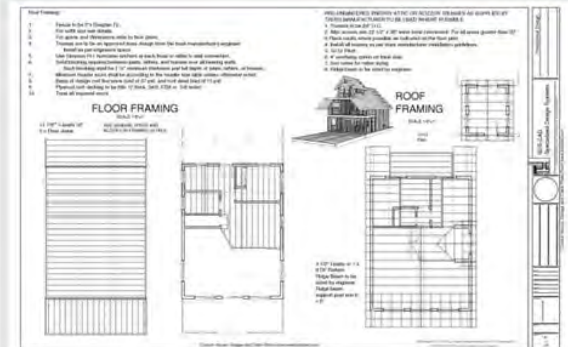
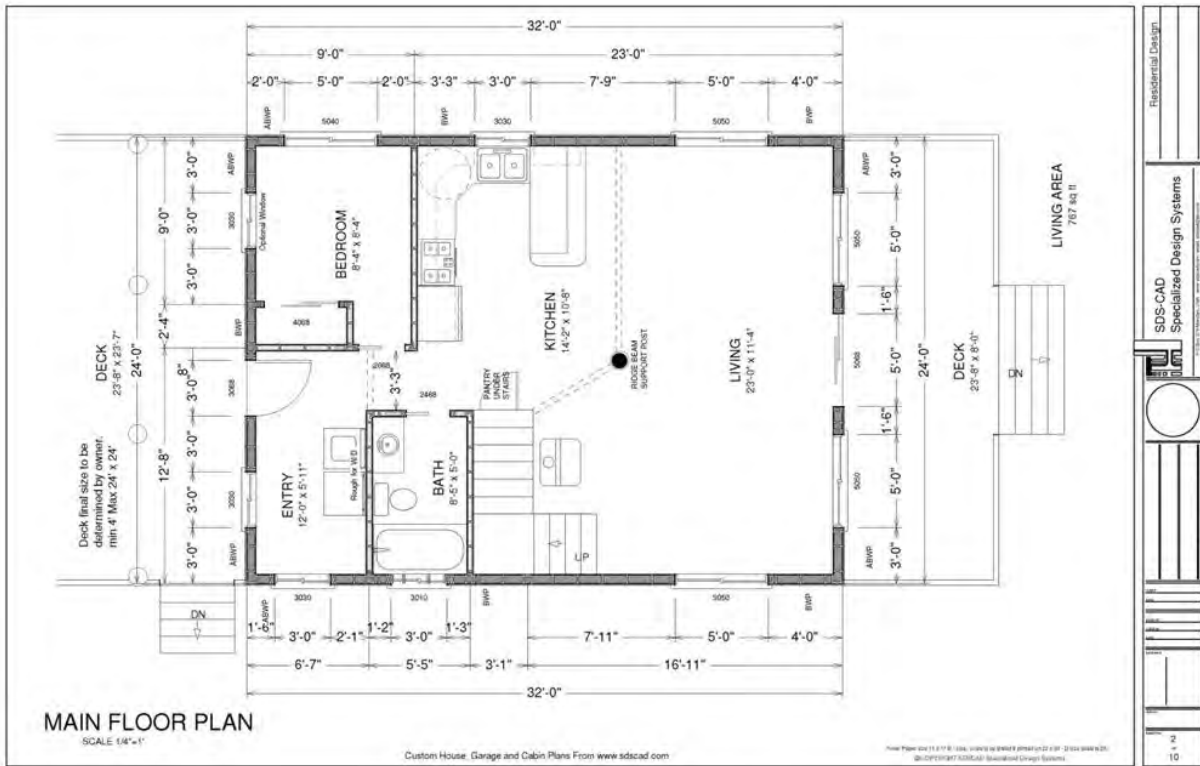
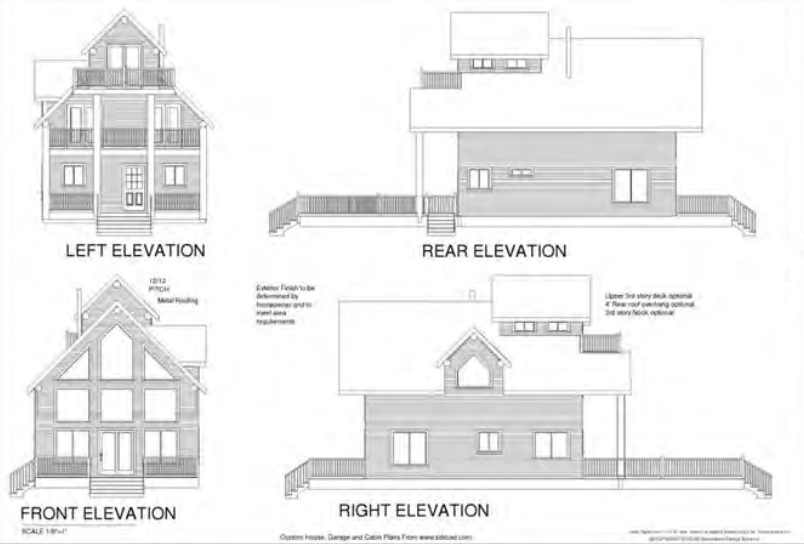


Custom Home Design
Plan #217 Cottage
By SDS-CAD Specialized Design Systems

To the best of my knowledge these plans are drawn to comply with current and all relevant specifications and any changes made to them after plans are made will be done at the owner's and I'm liable in respect and responsibility. This contract shall include all dimensions and mechanical loading. SDS-CAD is not liable for errors, omissions, or omissions. While every effort has been made to ensure the accuracy of these plans, the contractor is responsible for all dimensions and other details prior to construction and the ready construction. All dimensions will include any existing conditions for your building by a certified building official.

BUILDING CONTRACTORS/OWNER'S TO VERIFY:
 FOLLOWING ARE THE MINIMUM REQUIREMENTS:
 FOUNDATION: CONCRETE FOUNDATION SHALL BE 18" x 9" MIN. UNLESS OTHERWISE SPECIFIED.
 ROOF: 12/12 PITCH UNLESS OTHERWISE SPECIFIED.
 FLOORING: 3/4" MIN. UNLESS OTHERWISE SPECIFIED.
 WALLS: 20" x 9" MIN. UNLESS OTHERWISE SPECIFIED.
 CEILING: 20" x 9" MIN. UNLESS OTHERWISE SPECIFIED.
 INSULATION: R-35 MIN. UNLESS OTHERWISE SPECIFIED.
 VENTING: 1" MIN. AIR GAP AT EAVES WITH INSULATION Baffles/TYP. AT ALL TRUSS BAYS.
 GABLE VENTS: ALL GABLE ENDS.
 GABLE SOOF VENTS: ON BACKSIDE OF ROOF LINE ABOVE CONDENSED AREA.

Page 1: General Notes
 Page 2: Foundation Plan
 Page 3: Floor Plan
 Page 4: Second Floor Plan
 Page 5: Roof Plan
 Page 6: Porch Plan
 Page 7: Deck Plan
 Page 8: Elevation Notes
 Page 9: Elevation Notes
 Page 10: Elevation Notes
 Page 11: Elevation Notes





**Custom Home Design
Plan #232 Cabin Plans
By SDS-CAD Specialized Design Systems**

**BUILDING CONTRACTOR/HOME OWNER
TO REVIEW AND VERIFY ALL DIMENSIONS,
SIZES, AND CONNECTIONS BEFORE
CONSTRUCTION BEGINS.**

Page 1	Cover Page
Page 2	Main and 2nd Floor Plans
Page 3	Foundation Plan & Details
Page 4	Section and Details
Page 5	Elevation Plan
Page 6	Roof and Slat Details
Page 7	Main & 2nd Floor Electrical Plan
Page 8	Low Voltage Electrical & Gas Plan
Page 9	Plumbing Plan
Page 10	Shear Wall and Hold Downs
Page 11	Main and Second Floor Framing Details
Page 12	Roof Framing Plan
Page 13-15	Framing Details
Page 16	Truss Plan and Details
Page 17	Construction Notes
Page 18	Site Plan

To the best of my knowledge these plans are drawn to comply with owner's and/or builder's specifications and any changes made on them after prints are made will be done at the owner's and/or builder's expense and responsibility. The contractor shall verify all dimensions and enclosed drawing. SDS-CAD is not liable for errors once construction has begun. While every effort has been made in the preparation of the plan to avoid mistakes, the maker can not guarantee against human error. The contractor of the job must check all dimensions and other details prior to construction and be solely responsible thereafter. All calculations and member sizing should be verified for your building by a certified building official.

Residential Design
SDS-CAD Specialized Design Systems
18



WINDOW SCHEDULE					
NUMBER	QTY	FLOOR	SIZE	DIMENSIONS	DESCRIPTION
W01	1	1	3030	3630	DOUBLE HUNG
W02	2	1	3030	3630	DOUBLE HUNG
W03	3	1	3030	3630	DOUBLE HUNG
W04	2	1	3030	3630	DOUBLE HUNG
W05	1	2	3030	3630	DOUBLE HUNG
W06	2	2	3030	3630	DOUBLE HUNG

DOOR SCHEDULE					
NUMBER	QTY	FLOOR	SIZE	DIMENSIONS	DESCRIPTION
D01	2	1	2868	3030	6 PANEL DOOR
D02	3	1	2868	3030	6 PANEL DOOR
D03	4	1	2868	3030	6 PANEL DOOR
D04	1	1	2868	3030	6 PANEL DOOR
D05	1	1	3208	3830	EXT. 6 PANEL
D06	1	1	3408	4030	EXT. 6 PANEL
D07	1	1	3608	4230	EXT. 6 PANEL
D08	1	1	3808	4430	EXT. 6 PANEL
D09	2	1	3008	3608	EXT. 6 PANEL
D10	1	1	2168	25	1/4 TURN DOOR

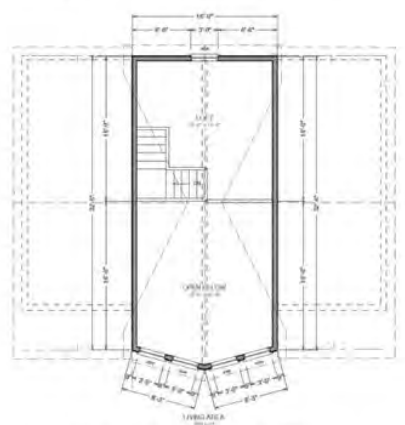
VENTING SCHEDULE	
Range Hoods	Vent to Exterior
All Bath Fans	Vent to Exterior
Dryer Vent	Vent to Exterior
Hot Water Htr	Vent From Laundry Rm
Fireplace Flue	Vent per MFG Specs

INSULATION SCHEDULE	
Ceilings	R-35 Min
Wall above grade	R-19 Min
Wall interior below grade	R-15 Min
Wall insulation against great rm	R-13 Min

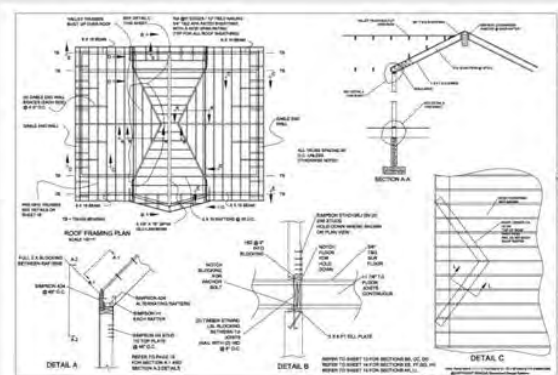
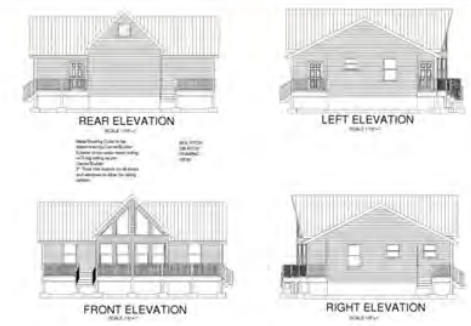
FINISH SCHEDULE			
Room	Floor Covering	Walls	Ceilings
Bathrooms	Vinyl	Sheetrock	Sheetrock
Kitchen	Vinyl	Sheetrock	Sheetrock
Laundry	Vinyl	Sheetrock	Sheetrock
Mud Room	Vinyl	Sheetrock	Sheetrock
Great Room	Carpet	T&G Siding	Sheetrock
Second Floor	Carpet	T&G Siding	Sheetrock
Bedroom	Carpet	Sheetrock	Sheetrock
Office	Carpet	Sheetrock	Sheetrock



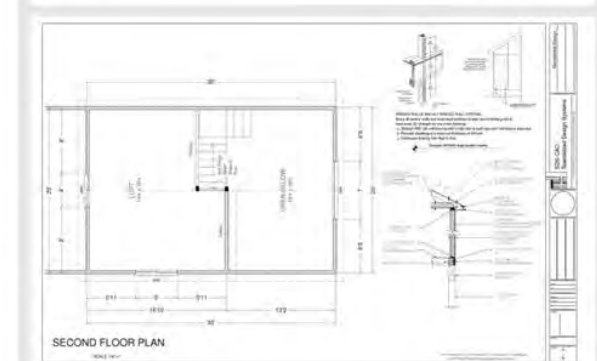
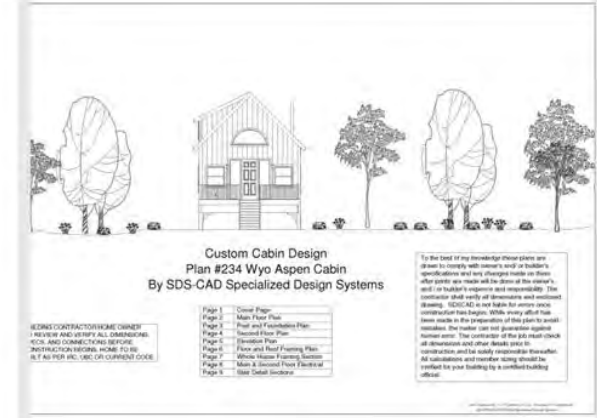
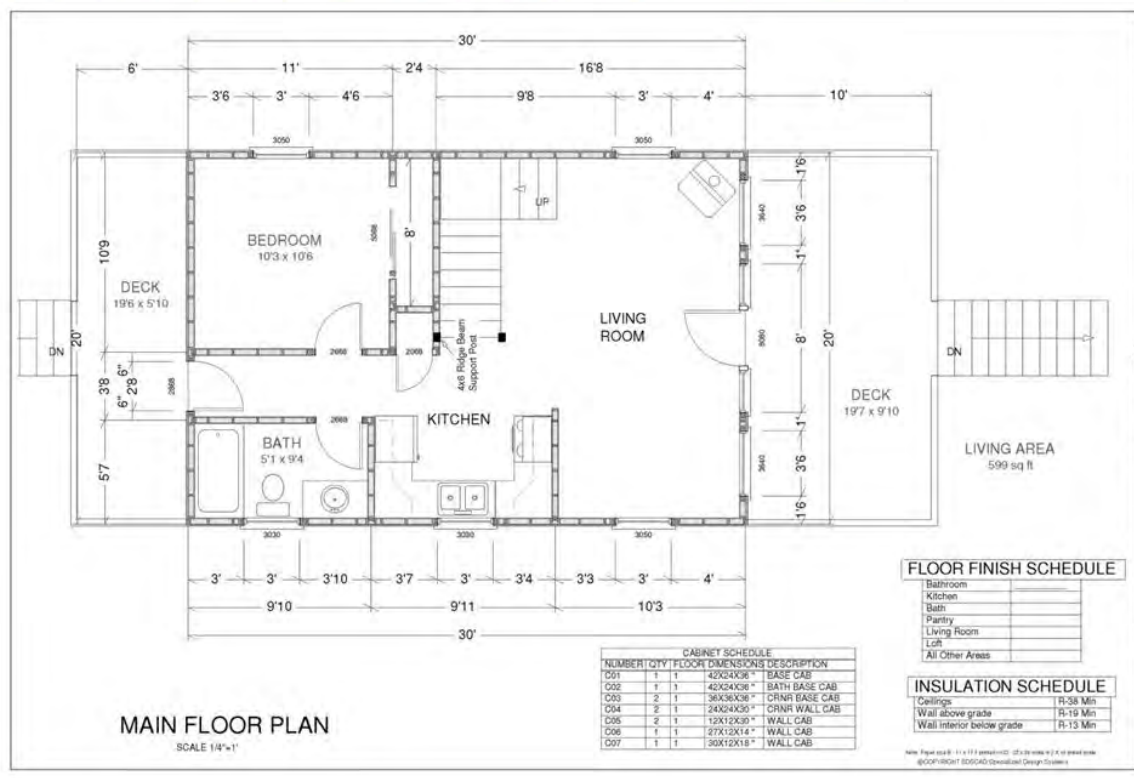
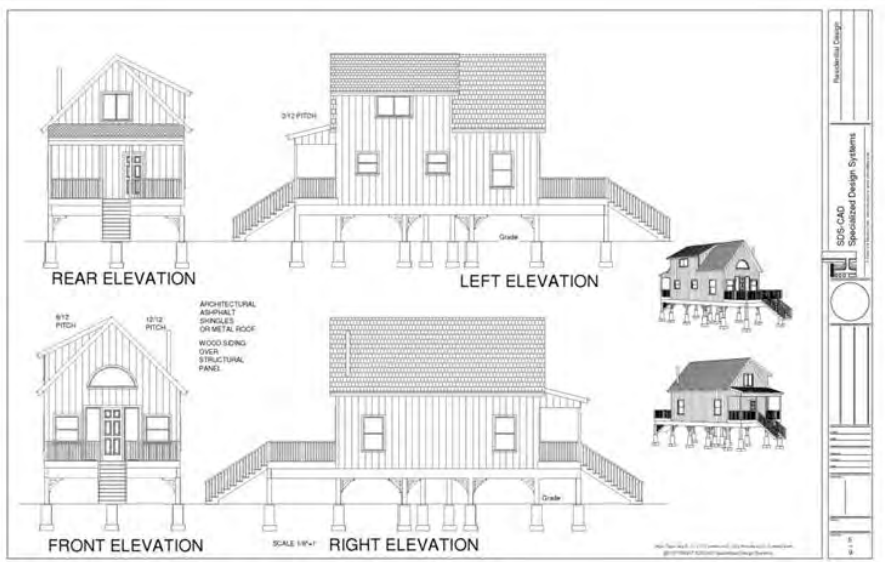
MAIN FLOOR PLAN
SCALE 1/8"=1'



SECOND FLOOR PLAN
SCALE 1/8"=1'



Residential Design
SDS-CAD Specialized Design Systems
18





**Custom Cabin Design
Plan #236 2 Story Cabin
By SDS-CAD Specialized Design Systems**

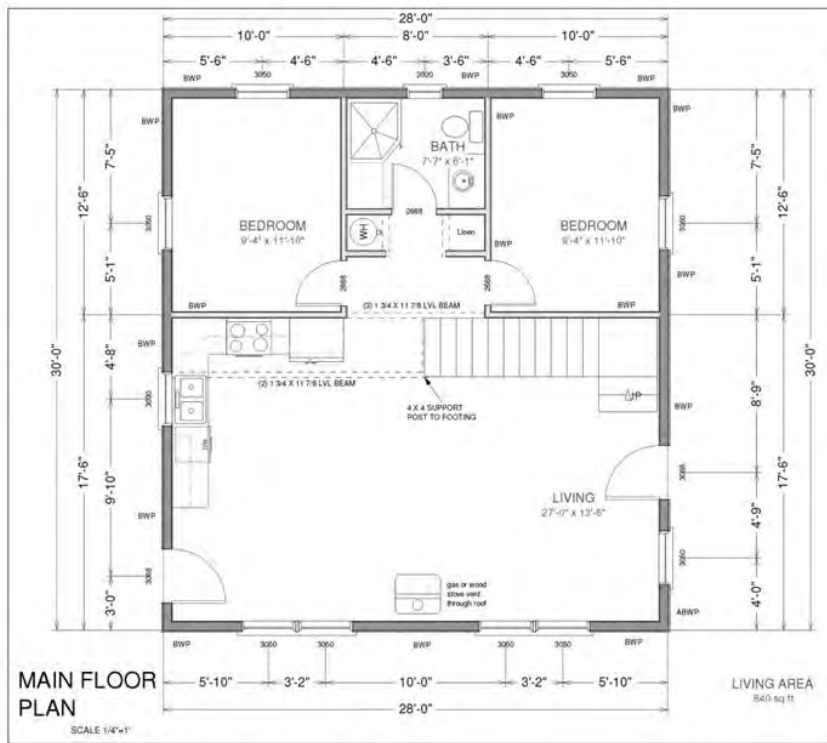
BUILDING CONTRACTOR/HOME OWNER
TO REVIEW AND VERIFY ALL DIMENSIONS,
SPCS, AND CONNECTIONS BEFORE
CONSTRUCTION BEGINS. HOME TO BE
BUILT AS PER IFC, UBC OR CURRENT CODE

- Page 1 Cover Page
- Page 2 Main Floor Plan
- Page 3 Foundation Plan
- Page 4 Second Floor Plan
- Page 5 Elevation Plan
- Page 6 Floor and Roof Framing Plan
- Page 7 Whole House Framing Section
- Page 8 Cabinet & Stair Details
- Page 9 Main Floor Electrical
- Page 10 Second Floor Electrical
- Page 11 Detailed House Section

To the best of my knowledge these plans are drawn to comply with owner's and/or builder's specifications and any changes made on them after prints are made will be done at the owner's and/or builder's expense and responsibility. The contractor shall verify all dimensions and enclosed drawing. SDS-CAD is not liable for errors once construction has begun. While every effort has been made in the preparation of this plan to avoid mistakes, the maker can not guarantee against human error. The contractor of the job must check all dimensions and other details prior to construction and be solely responsible thereafter. All calculations and member sizing should be verified for your building by a certified building official.

10/1/2018 10:11 AM
©SDS-CAD Specialized Design Systems

Residential Design
SDS-CAD Specialized Design Systems
11



VENTING SCHEDULE

Range Hoods	Vent Through Roof
All Bath Fans	Vent to Exterior
Dryer Vent	Vent to Exterior

ATIC VENTILATION AREA = 300

PROVIDE 1" MIN AIR GAP AT EASES WITH INSULATION DETAILS FOR ALL TRUSS BAYS

PROVIDE GABLE VENTS ALL GABLE ENDS

PROVIDE GABLE VENTS ON BACKSIDE OF ROOFLINE WHERE CONDITIONED AREA

FOOTING SCHEDULE

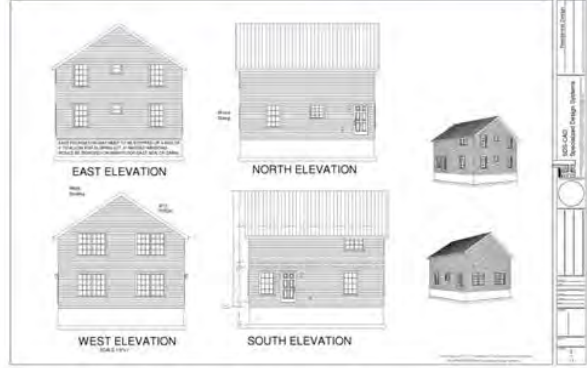
HOUSE WALLS	20" x 9" Min
DECKS & PORCHES	18" x 9" Min
BEARING WALL	20" x 9" Min
GARAGE WALL	18" x 9" Min

Min 2 #4 Rebar Horizontal on undisturbed or compacted soil

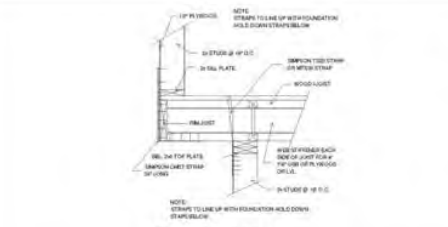
INSULATION SCHEDULE

Ceilings	R-38 Min
Wall above grade	R-19 Min
Wall interior below grade	R-13 Min

Residential Design
SDS-CAD Specialized Design Systems
11



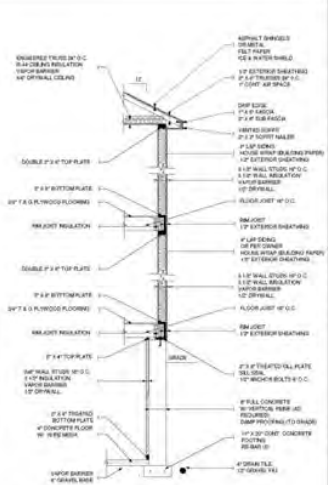
Residential Design
SDS-CAD Specialized Design Systems
11



CANTILEVER DETAIL

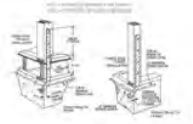


SECOND FLOOR PLAN
SCALE 1/8"=1'

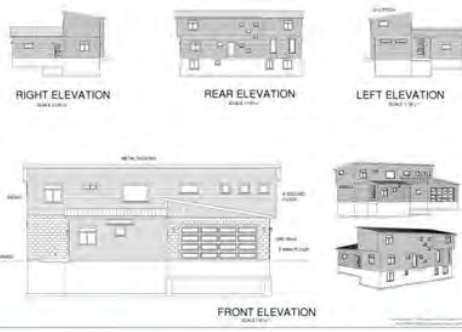
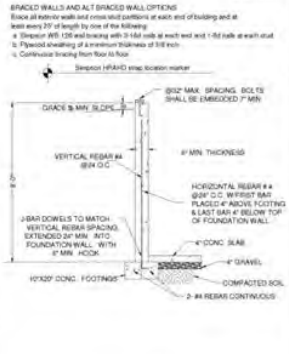


Typical 2 Story Section

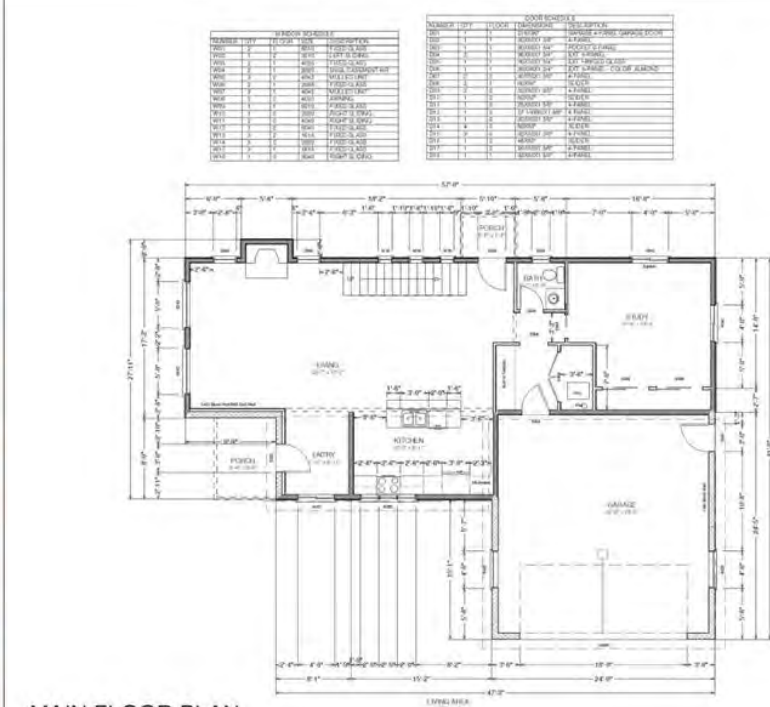
- CONCRETE
- All slabs are to be 4" concrete over 4" gravel unless otherwise noted on the plans.
 - Concrete to be ACI 301-45, Type II cement, 2500 psi at 28 days, 4" maximum slump.
 - Reinforcing to be ASTM A615-Bars with Fy-60 ksi max 36 diameter maximum at splices as wall per ACI 308.
 - Column design based on Fc-2000 psi, Fc-2500 psi for quality only.
 - Anchor bolts shall be A-307 embedded 7" minimum into concrete or masonry grout.



FOUNDATION PLAN
SCALE 1/8"=1'



RIGHT ELEVATION
REAR ELEVATION
LEFT ELEVATION
FRONT ELEVATION



MAIN FLOOR PLAN
SCALE 1/8"=1'

NUMBER	TYPE	DOOR	THRESHOLD	FINISH	REMARKS
101	1	SWING	1/2\"	WOOD	ENTRY
102	1	SLIDING	1/2\"	WOOD	BATH
103	1	SLIDING	1/2\"	WOOD	KITCHEN
104	1	SLIDING	1/2\"	WOOD	LIVING
105	1	SLIDING	1/2\"	WOOD	BED
106	1	SLIDING	1/2\"	WOOD	BED
107	1	SLIDING	1/2\"	WOOD	BED
108	1	SLIDING	1/2\"	WOOD	BED
109	1	SLIDING	1/2\"	WOOD	BED
110	1	SLIDING	1/2\"	WOOD	BED
111	1	SLIDING	1/2\"	WOOD	BED
112	1	SLIDING	1/2\"	WOOD	BED
113	1	SLIDING	1/2\"	WOOD	BED
114	1	SLIDING	1/2\"	WOOD	BED
115	1	SLIDING	1/2\"	WOOD	BED
116	1	SLIDING	1/2\"	WOOD	BED
117	1	SLIDING	1/2\"	WOOD	BED
118	1	SLIDING	1/2\"	WOOD	BED
119	1	SLIDING	1/2\"	WOOD	BED
120	1	SLIDING	1/2\"	WOOD	BED

NUMBER	TYPE	DOOR	THRESHOLD	FINISH	REMARKS
201	1	SWING	1/2\"	WOOD	ENTRY
202	1	SLIDING	1/2\"	WOOD	BATH
203	1	SLIDING	1/2\"	WOOD	KITCHEN
204	1	SLIDING	1/2\"	WOOD	LIVING
205	1	SLIDING	1/2\"	WOOD	BED
206	1	SLIDING	1/2\"	WOOD	BED
207	1	SLIDING	1/2\"	WOOD	BED
208	1	SLIDING	1/2\"	WOOD	BED
209	1	SLIDING	1/2\"	WOOD	BED
210	1	SLIDING	1/2\"	WOOD	BED
211	1	SLIDING	1/2\"	WOOD	BED
212	1	SLIDING	1/2\"	WOOD	BED
213	1	SLIDING	1/2\"	WOOD	BED
214	1	SLIDING	1/2\"	WOOD	BED
215	1	SLIDING	1/2\"	WOOD	BED
216	1	SLIDING	1/2\"	WOOD	BED
217	1	SLIDING	1/2\"	WOOD	BED
218	1	SLIDING	1/2\"	WOOD	BED
219	1	SLIDING	1/2\"	WOOD	BED
220	1	SLIDING	1/2\"	WOOD	BED

VENTING SCHEDULE

Range Hoods	Vent Through Hood
All Bath Fans	Vent to Exterior
Dryer Vent	Vent to Exterior

ATTN: VENTILATION AREA 100

PROVIDE 1" MIN AIR GAP AT LAMES WITH INSULATION BATTERS 1/4" AT ALL TRUSS BAYS

PROVIDE GABLE VENTS ALL GABLE ENDS

PROVIDE GABLE ROOF VENTS ON BACKSIDE OF ROOFLINE ABOVE CONDITIONED AREA

FOOTING SCHEDULE

HOUSE WALLS	20" x 9" Min
DECKS & PORCHES	18" x 9" Min
BEARING WALL	20" x 9" Min
GARAGE WALL	18" x 9" Min

Min 2 #4 Rebar Horizontal on undisturbed or compacted soil

INSULATION SCHEDULE

Ceilings	R-38 Min
Wall above grade	R-19 Min
Wall interior below grade	R-13 Min



Plan #H246



VENTING SCHEDULE	
Range Hoods	Vent Through Roof
All Bath Fans	Vent to Exterior
Dryer Vent	Vent to Exterior

INSULATION SCHEDULE	
Ceilings	R-38 Min
Wall above grade	R-19 Min
Wall interior below grade	R-13 Min

ROOF SCHEDULE			
MEMBER	TYPE	THICKNESS	FINISHES
ROOF	1	12"	ASPH/FLT SHINGLES
CEILING	1	12"	ASPH/FLT SHINGLES
CEILING	2	12"	ASPH/FLT SHINGLES
CEILING	3	12"	ASPH/FLT SHINGLES
CEILING	4	12"	ASPH/FLT SHINGLES
CEILING	5	12"	ASPH/FLT SHINGLES
CEILING	6	12"	ASPH/FLT SHINGLES
CEILING	7	12"	ASPH/FLT SHINGLES
CEILING	8	12"	ASPH/FLT SHINGLES
CEILING	9	12"	ASPH/FLT SHINGLES
CEILING	10	12"	ASPH/FLT SHINGLES
CEILING	11	12"	ASPH/FLT SHINGLES
CEILING	12	12"	ASPH/FLT SHINGLES
CEILING	13	12"	ASPH/FLT SHINGLES
CEILING	14	12"	ASPH/FLT SHINGLES
CEILING	15	12"	ASPH/FLT SHINGLES
CEILING	16	12"	ASPH/FLT SHINGLES
CEILING	17	12"	ASPH/FLT SHINGLES
CEILING	18	12"	ASPH/FLT SHINGLES
CEILING	19	12"	ASPH/FLT SHINGLES
CEILING	20	12"	ASPH/FLT SHINGLES
CEILING	21	12"	ASPH/FLT SHINGLES
CEILING	22	12"	ASPH/FLT SHINGLES
CEILING	23	12"	ASPH/FLT SHINGLES
CEILING	24	12"	ASPH/FLT SHINGLES
CEILING	25	12"	ASPH/FLT SHINGLES
CEILING	26	12"	ASPH/FLT SHINGLES
CEILING	27	12"	ASPH/FLT SHINGLES
CEILING	28	12"	ASPH/FLT SHINGLES
CEILING	29	12"	ASPH/FLT SHINGLES
CEILING	30	12"	ASPH/FLT SHINGLES
CEILING	31	12"	ASPH/FLT SHINGLES
CEILING	32	12"	ASPH/FLT SHINGLES
CEILING	33	12"	ASPH/FLT SHINGLES
CEILING	34	12"	ASPH/FLT SHINGLES
CEILING	35	12"	ASPH/FLT SHINGLES
CEILING	36	12"	ASPH/FLT SHINGLES
CEILING	37	12"	ASPH/FLT SHINGLES
CEILING	38	12"	ASPH/FLT SHINGLES
CEILING	39	12"	ASPH/FLT SHINGLES
CEILING	40	12"	ASPH/FLT SHINGLES
CEILING	41	12"	ASPH/FLT SHINGLES
CEILING	42	12"	ASPH/FLT SHINGLES
CEILING	43	12"	ASPH/FLT SHINGLES
CEILING	44	12"	ASPH/FLT SHINGLES
CEILING	45	12"	ASPH/FLT SHINGLES
CEILING	46	12"	ASPH/FLT SHINGLES
CEILING	47	12"	ASPH/FLT SHINGLES
CEILING	48	12"	ASPH/FLT SHINGLES
CEILING	49	12"	ASPH/FLT SHINGLES
CEILING	50	12"	ASPH/FLT SHINGLES

WINDOW SCHEDULE			
MEMBER	TYPE	THICKNESS	FINISHES
WINDOW	1	12"	ASPH/FLT SHINGLES
WINDOW	2	12"	ASPH/FLT SHINGLES
WINDOW	3	12"	ASPH/FLT SHINGLES
WINDOW	4	12"	ASPH/FLT SHINGLES
WINDOW	5	12"	ASPH/FLT SHINGLES
WINDOW	6	12"	ASPH/FLT SHINGLES
WINDOW	7	12"	ASPH/FLT SHINGLES
WINDOW	8	12"	ASPH/FLT SHINGLES
WINDOW	9	12"	ASPH/FLT SHINGLES
WINDOW	10	12"	ASPH/FLT SHINGLES
WINDOW	11	12"	ASPH/FLT SHINGLES
WINDOW	12	12"	ASPH/FLT SHINGLES
WINDOW	13	12"	ASPH/FLT SHINGLES
WINDOW	14	12"	ASPH/FLT SHINGLES
WINDOW	15	12"	ASPH/FLT SHINGLES
WINDOW	16	12"	ASPH/FLT SHINGLES
WINDOW	17	12"	ASPH/FLT SHINGLES
WINDOW	18	12"	ASPH/FLT SHINGLES
WINDOW	19	12"	ASPH/FLT SHINGLES
WINDOW	20	12"	ASPH/FLT SHINGLES
WINDOW	21	12"	ASPH/FLT SHINGLES
WINDOW	22	12"	ASPH/FLT SHINGLES
WINDOW	23	12"	ASPH/FLT SHINGLES
WINDOW	24	12"	ASPH/FLT SHINGLES
WINDOW	25	12"	ASPH/FLT SHINGLES
WINDOW	26	12"	ASPH/FLT SHINGLES
WINDOW	27	12"	ASPH/FLT SHINGLES
WINDOW	28	12"	ASPH/FLT SHINGLES
WINDOW	29	12"	ASPH/FLT SHINGLES
WINDOW	30	12"	ASPH/FLT SHINGLES
WINDOW	31	12"	ASPH/FLT SHINGLES
WINDOW	32	12"	ASPH/FLT SHINGLES
WINDOW	33	12"	ASPH/FLT SHINGLES
WINDOW	34	12"	ASPH/FLT SHINGLES
WINDOW	35	12"	ASPH/FLT SHINGLES
WINDOW	36	12"	ASPH/FLT SHINGLES
WINDOW	37	12"	ASPH/FLT SHINGLES
WINDOW	38	12"	ASPH/FLT SHINGLES
WINDOW	39	12"	ASPH/FLT SHINGLES
WINDOW	40	12"	ASPH/FLT SHINGLES
WINDOW	41	12"	ASPH/FLT SHINGLES
WINDOW	42	12"	ASPH/FLT SHINGLES
WINDOW	43	12"	ASPH/FLT SHINGLES
WINDOW	44	12"	ASPH/FLT SHINGLES
WINDOW	45	12"	ASPH/FLT SHINGLES
WINDOW	46	12"	ASPH/FLT SHINGLES
WINDOW	47	12"	ASPH/FLT SHINGLES
WINDOW	48	12"	ASPH/FLT SHINGLES
WINDOW	49	12"	ASPH/FLT SHINGLES
WINDOW	50	12"	ASPH/FLT SHINGLES

MAIN FLOOR PLAN SCALE 1/8"=1'

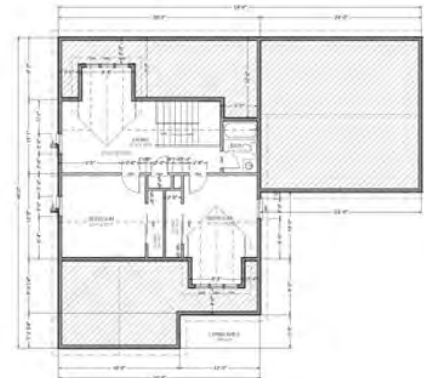
SECOND FLOOR PLAN

Teton Cabin #257

1000 Sq Ft Main
 320 Sq Ft Loft
 2 Bedroom 1 Bath
 Large Deck
 Crawl Space



Residential Design
 SDS-CAD
 Specialized Design Systems
 Custom House, Garage and Cabin Plans From www.sds-cad.com



SECOND FLOOR PLAN

SCALE 1/8"=1'

NUMBER	QTY	FLOOR	DOOR SCHEDULE	WIDTH	HEIGHT
D01	1	1	2000	36"	80"
D02	1	1	4000	36"	80"
D03	1	1	11000	36"	80"
D04	1	1	12000	36"	80"
D05	1	1	2000	36"	80"
D06	1	1	2000	36"	80"
D07	1	1	3000	36"	80"
D08	1	1	4000	36"	80"
D09	1	1	4000	36"	80"
D10	1	1	4000	36"	80"
D11	1	1	4000	36"	80"
D12	1	1	2000	36"	80"
D13	1	1	4000	36"	80"
D14	1	1	4000	36"	80"

NUMBER	QTY	FLOOR	WINDOW SCHEDULE	WIDTH	HEIGHT
W01	1	1	2000	24"	24"
W02	1	1	2000	24"	24"
W03	1	1	2000	24"	24"
W04	1	1	2000	24"	24"
W05	1	1	2000	24"	24"
W06	1	1	2000	24"	24"
W07	1	1	2000	24"	24"
W08	1	1	2000	24"	24"

NUMBER	QTY	FLOOR	CABINETS	WIDTH	HEIGHT	DESCRIPTION
C01	1	1	1000	24"	36"	BATH CAB
C02	1	1	1000	24"	36"	BATH CAB
C03	1	1	1000	24"	36"	BATH CAB
C04	1	1	1000	24"	36"	BATH CAB
C05	1	1	1000	24"	36"	BATH CAB
C06	1	1	1000	24"	36"	BATH CAB
C07	1	1	1000	24"	36"	BATH CAB
C08	1	1	1000	24"	36"	BATH CAB
C09	1	1	1000	24"	36"	BATH CAB
C10	1	1	1000	24"	36"	BATH CAB
C11	1	1	1000	24"	36"	BATH CAB
C12	1	1	1000	24"	36"	BATH CAB
C13	1	1	1000	24"	36"	BATH CAB
C14	1	1	1000	24"	36"	BATH CAB
C15	1	1	1000	24"	36"	BATH CAB
C16	1	1	1000	24"	36"	BATH CAB
C17	1	1	1000	24"	36"	BATH CAB
C18	1	1	1000	24"	36"	BATH CAB

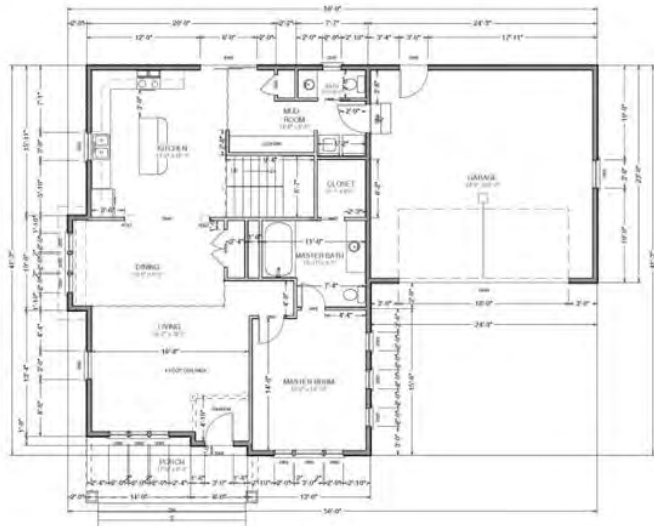
11/11/2011 10:11:11 AM C:\Users\j\Documents\Projects\Cottage House Plan #267\CAD\2011\20110111_101111.dwg

Residential Design

SDS-CAD Specialized Design Systems

4

11



MAIN FLOOR PLAN

SCALE 1/8"=1'

VENTING SCHEDULE

Range Hoods	Vent Through Roof
All Bath Fans	Vent to Exterior
Dryer Vents	Vent to Exterior

ATTIC VENTILATION

AREA / 300

PROVIDE 1" MIN AIR GAP AT EAVES WITH INSULATION

RAFTERS TYP. AT ALL TRUSS SPANS

PROVIDE GABLE VENTS ALL GABLE ENDS

PROVIDE GALV. ROOF VENTS - ON BACKSIDE OF ROOF LINE ABOVE CONDITIONED AREA

FOOTING SCHEDULE

HOUSE WALLS	20" x 9" Min
DECKS & PORCHES	18" x 9" Min
BEARING WALL	20" x 9" Min
GARAGE WALL	18" x 9" Min

Min 2 #4 Rebar Horizontal on undisturbed or compacted soil

INSULATION SCHEDULE

Ceilings	R-49 Min
Wall above grade	R-21 Min
Wall interior below grade	R-13 Min

Residential Design

SDS-CAD Specialized Design Systems

2

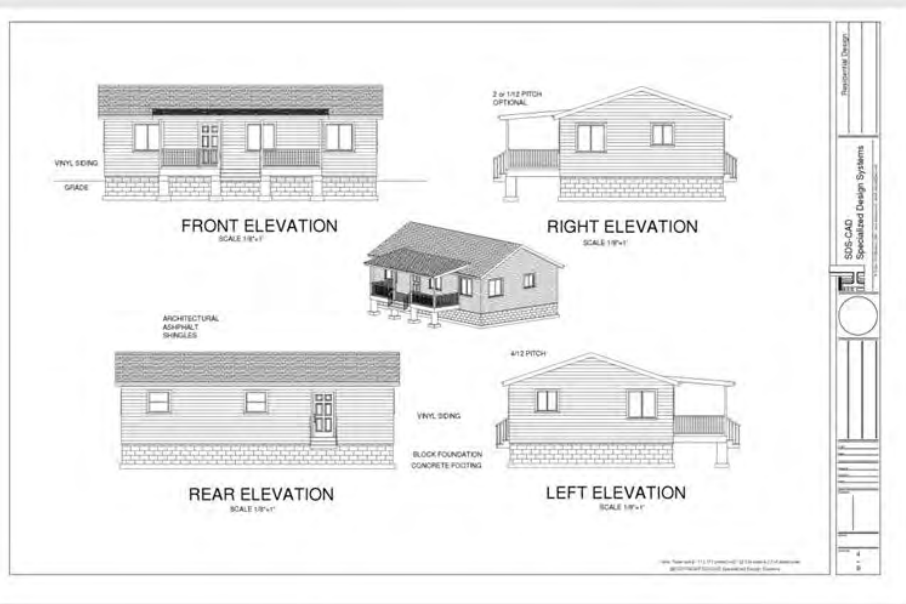
11



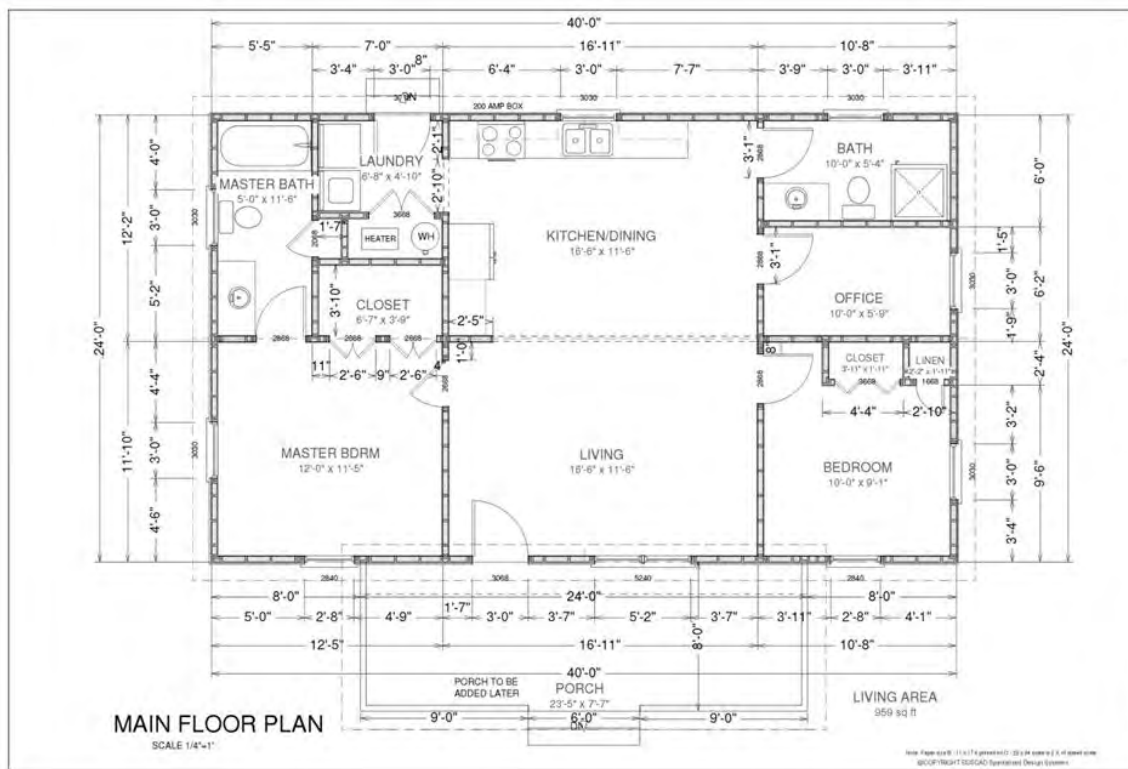
Cottage House Plan #267

1150 Sq Ft Main
699 Sq Ft Second
3 Bedroom 2 Bath
Large Deck
Basement

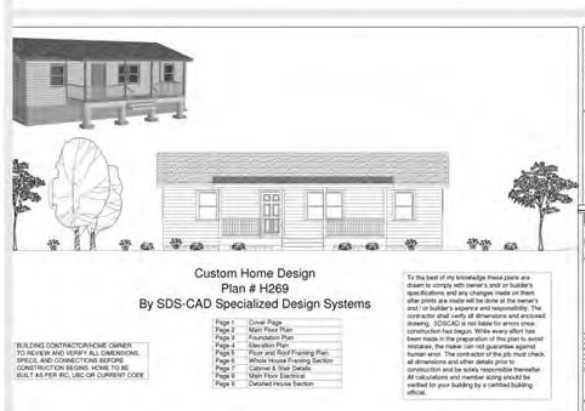
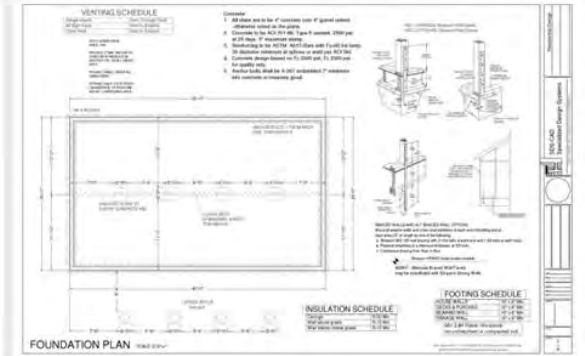




Residential Design
 SDS-CAD
 Specialized Design Systems
 11177 Greenwood Dr. Suite 204
 Greenwood Village, CO 80120
 303.440.9400
 www.sds-cad.com



Residential Design
 SDS-CAD
 Specialized Design Systems
 11177 Greenwood Dr. Suite 204
 Greenwood Village, CO 80120
 303.440.9400
 www.sds-cad.com





Custom Home Design Remodel
 #H273 Lake House
 By SDS-CAD Specialized Design Systems

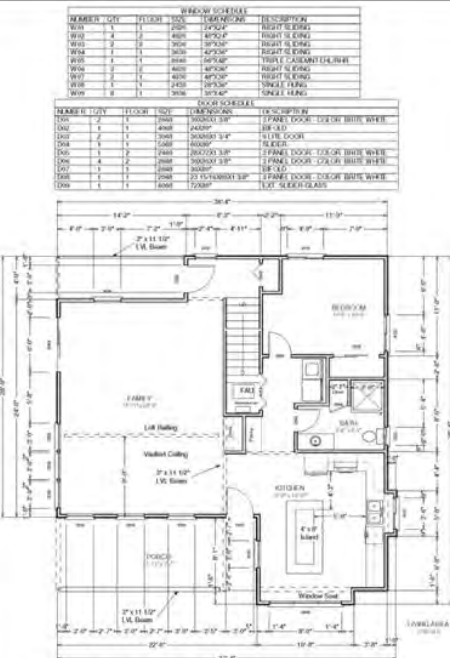
BUILDING CONTRACTOR/HOME OWNER
 TO REVIEW AND VERIFY ALL DIMENSIONS,
 SPECS, AND CONNECTIONS BEFORE
 CONSTRUCTION BEGINS. HOME TO BE
 BUILT AS PER IRC, UBC OR CURRENT CODE

Page 1	Cover Page
Page 2	Main and 2nd Floor Plan
Page 3	Foundation Plan
Page 4	Elevation Plan
Page 5	Floor and Roof Framing Plans
Page 6	Whole House Framing Section
Page 7	Cabinet & Stair Details
Page 8	Electrical Plans
Page 9	Details

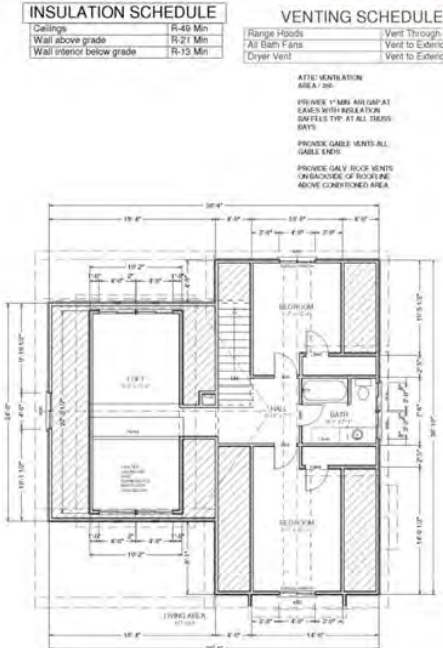
To the best of my knowledge these plans are drawn to comply with owner's and/or builder's specifications and any changes made on them after prints are made will be done at the owner's and/or builder's expense and responsibility. The contractor shall verify all dimensions and enclosed drawing. SDS-CAD is not liable for errors once construction has begun. While every effort has been made in the preparation of this plan to avoid mistakes, the maker can not guarantee against human error. The contractor of the job must check all dimensions and other details prior to construction and be solely responsible thereafter. All calculations and member sizing should be verified for your building by a certified building official.

Plot Date: 08/11/2014 11:00 AM
 Plot Size: 11.00 x 17.00
 Plot Scale: 1/8" = 1'-0"

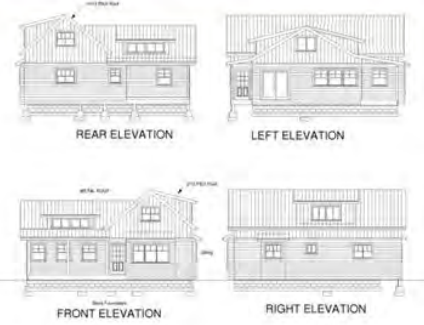
Residential Design
 SDS-CAD Specialized Design Systems
 11000 17th Street, Suite 100, Denver, CO 80202
 Phone: (303) 751-7174
 Fax: (303) 751-7175
 Email: info@sdscad.com
 Website: www.sdscad.com



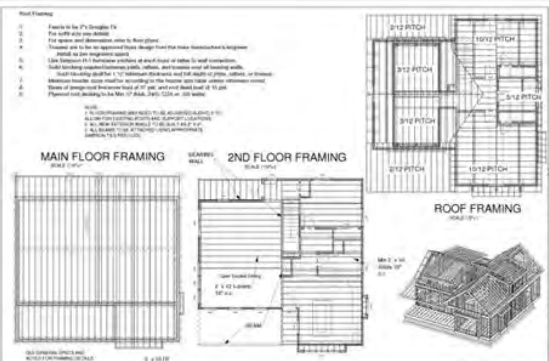
MAIN FLOOR PLAN
 SCALE 1/8"=1'



SECOND FLOOR PLAN
 SCALE 1/8"=1'



REAR ELEVATION
 LEFT ELEVATION
 FRONT ELEVATION
 RIGHT ELEVATION



MAIN FLOOR FRAMING
 2ND FLOOR FRAMING
 ROOF FRAMING

Residential Design
 SDS-CAD Specialized Design Systems
 11000 17th Street, Suite 100, Denver, CO 80202
 Phone: (303) 751-7174
 Fax: (303) 751-7175
 Email: info@sdscad.com
 Website: www.sdscad.com

Plan #H277

